

# PRODUCT INFORMATION PACKET



Model No: 120376.00  
Catalog No: 120376.00  
3 HP Agricultural Motor, 1 phase, 3600 RPM, 230 V, 145T Frame, TEAO  
Agricultural Motors



Regal and Leeson are trademarks of Regal Rexnord Corporation or one of its affiliated companies.  
©2021 Regal Rexnord Corporation, All Rights Reserved. MC017097E





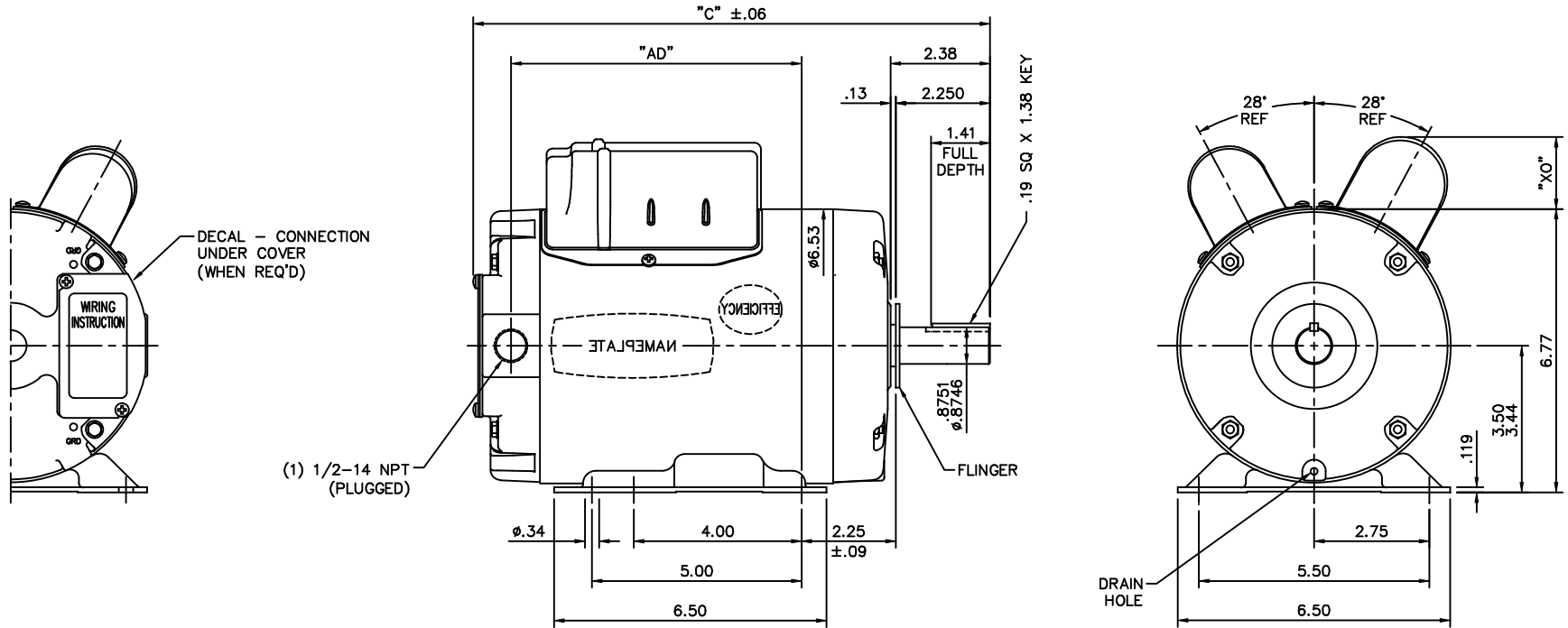
### Nameplate Specifications

Output HP	<b>3 Hp</b>	Output KW	<b>2.2 kW</b>
Frequency	<b>60 Hz</b>	Voltage	<b>230 V</b>
Current	<b>12.8 A</b>	Speed	<b>3450 rpm</b>
Service Factor	<b>1</b>	Phase	<b>1</b>
Efficiency	<b>82.5 %</b>	Power Factor	<b>92</b>
Duty	<b>Continuous</b>	Insulation Class	<b>F</b>
Design Code	<b>L</b>	KVA Code	<b>J</b>
Frame	<b>145T</b>	Enclosure	<b>Totally Enclosed Air Over</b>
Thermal Protection	<b>No</b>	Ambient Temperature	<b>40 °C</b>
Drive End Bearing Size	<b>6205</b>	Opp Drive End Bearing Size	<b>6203</b>
UL	<b>Recognized</b>	CSA	<b>Y</b>
CE	<b>N</b>	IP Code	<b>43</b>
Number of Speeds	<b>1</b>		

### Technical Specifications

Electrical Type	<b>Capacitor Start Capacitor Run</b>	Starting Method	<b>Across The Line</b>
Poles	<b>2</b>	Rotation	<b>Selective Counterclockwise</b>
Resistance Main	<b>.71 Ohms</b>	Mounting	<b>Rigid Base</b>
Motor Orientation	<b>Horizontal</b>	Drive End Bearing	<b>Ball</b>
Opp Drive End Bearing	<b>Ball</b>	Frame Material	<b>Rolled Steel</b>
Shaft Type	<b>T</b>	Overall Length	<b>13.84 in</b>
Frame Length	<b>8.50 in</b>	Shaft Diameter	<b>0.875 in</b>
Shaft Extension	<b>2.25 in</b>	Assembly/Box Mounting	<b>F1 ONLY</b>
Connection Drawing	<b>005018.09</b>	Outline Drawing	<b>028649-850B</b>

This is an uncontrolled document once printed or downloaded and is subject to change without notice. Date Created:10/07/2021



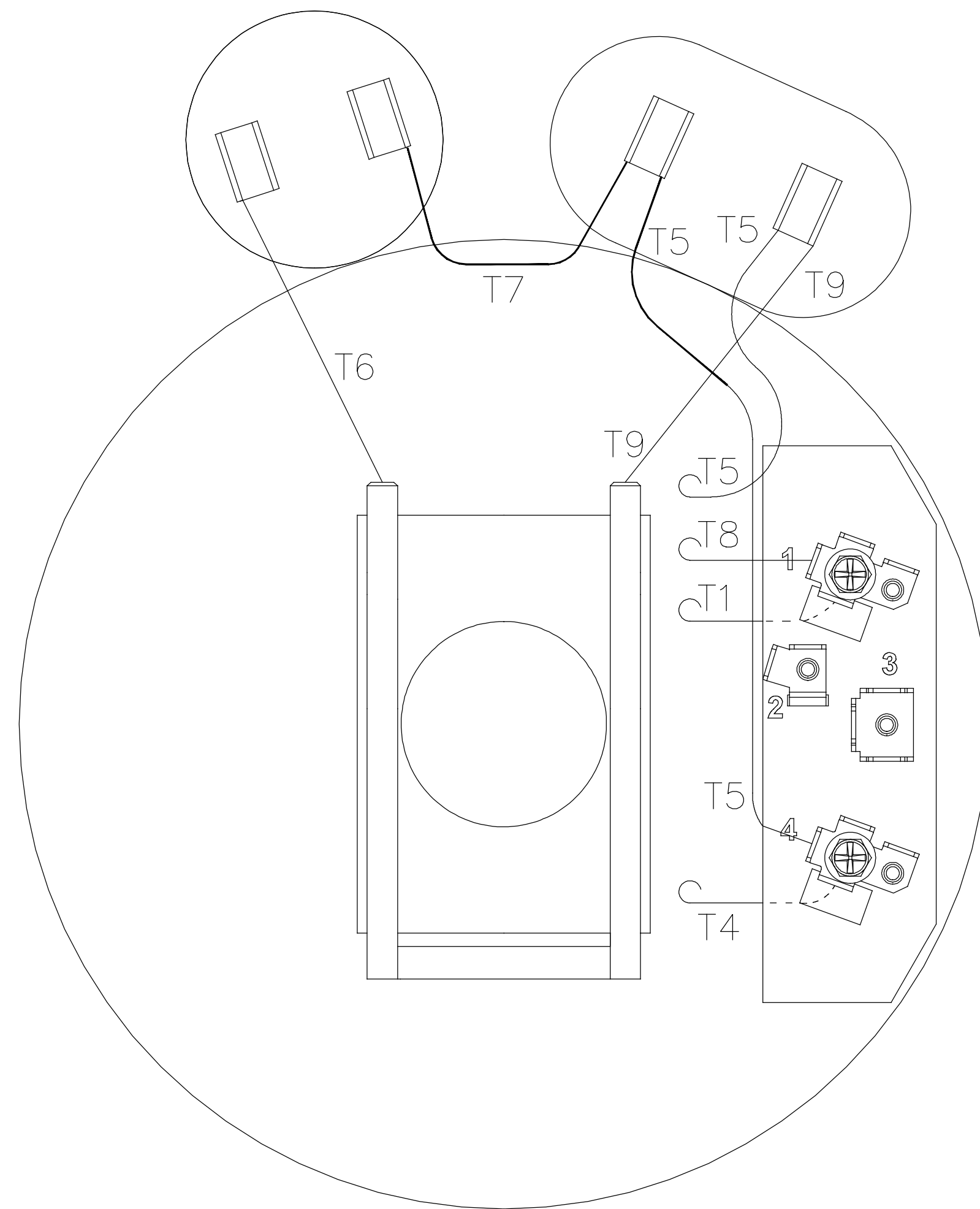
DASH NO.	"C"	"AD"	CAP. DASH	"XO"
650	11.84	6.44	A	1.06
700	12.34	6.94	B	1.51
750	12.84	7.44	C	1.73
800	13.34	7.94		
850	13.84	8.44		

GASKETS THROUGHOUT

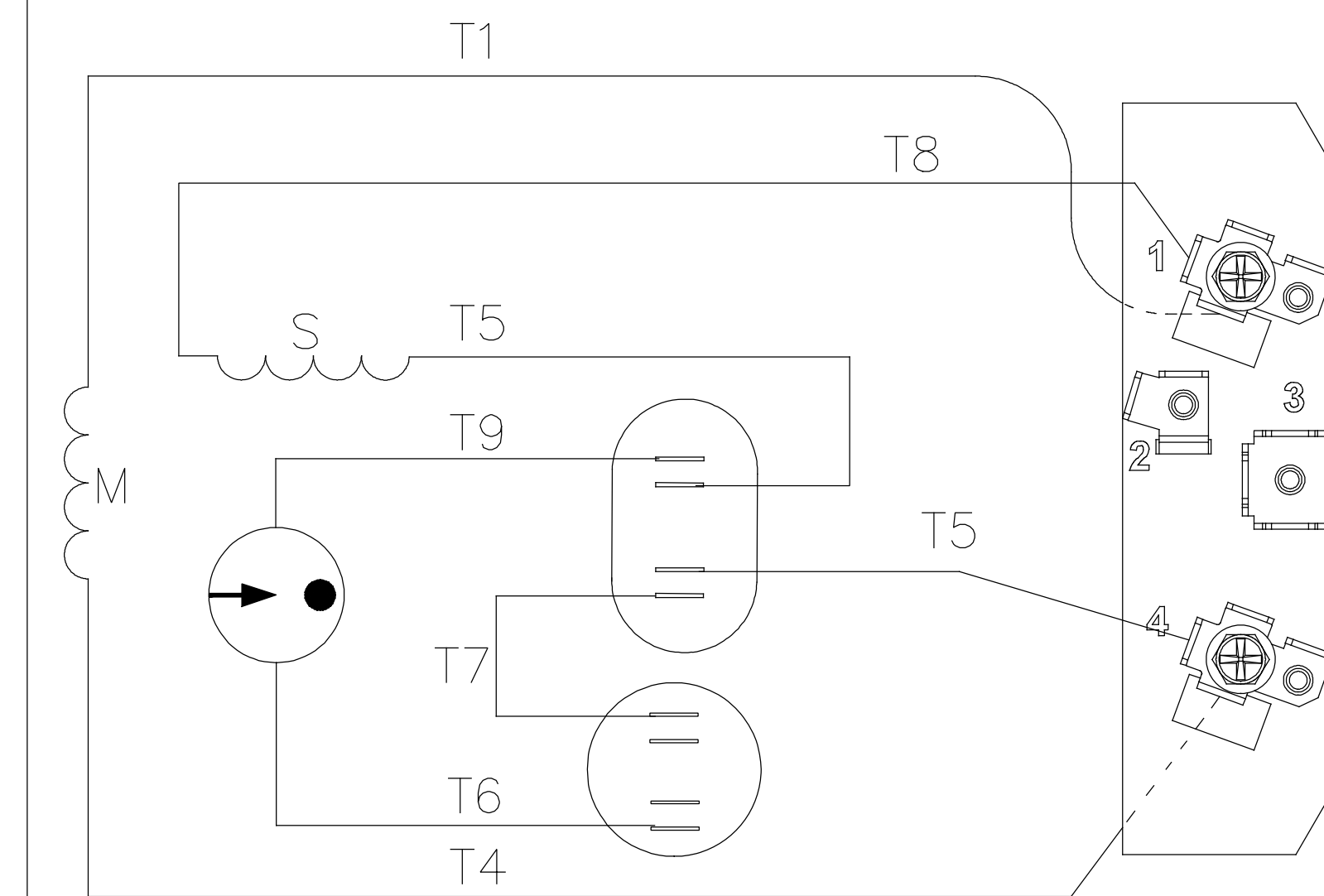
NO.		REVISION	BY & DATE	CHK	ANG	±1/2"	FINISH	ELECTRIC MOTORS GEARMOTORS AND DRIVES		DRAWN	RDW 10/27/04
THIS DRAWING IN DESIGN AND DETAIL IS OUR PROPERTY AND MUST NOT BE USED EXCEPT IN CONNECTION WITH OUR WORK ALL RIGHTS OF DESIGN AND INVENTION ARE RESERVED THIS IS AN ELECTRONICALLY GENERATED DOCUMENT - DO NOT SCALE THIS PRINT								LEESON		CHK	
TOLERANCES UNLESS SPECIFIED								TITLE		APPD	SW 10/27/04
.X ±.1								OUTLINE - 140T FRAME		SCALE	3=8
.XX ±.03								TENV - RIGID		REF	
.XXX ±.005								FAN DUTY		FMF	120376
.XXXX ±.0005								MAT'L		PREV	
RFP 10/27/04								CAD FILE	028649	SIZE	DRAWING NO.
DIST BRF										B	028649
											REV.

005018-09

VIEW FROM OUTSIDE OF MOTOR AT SWITCH END.



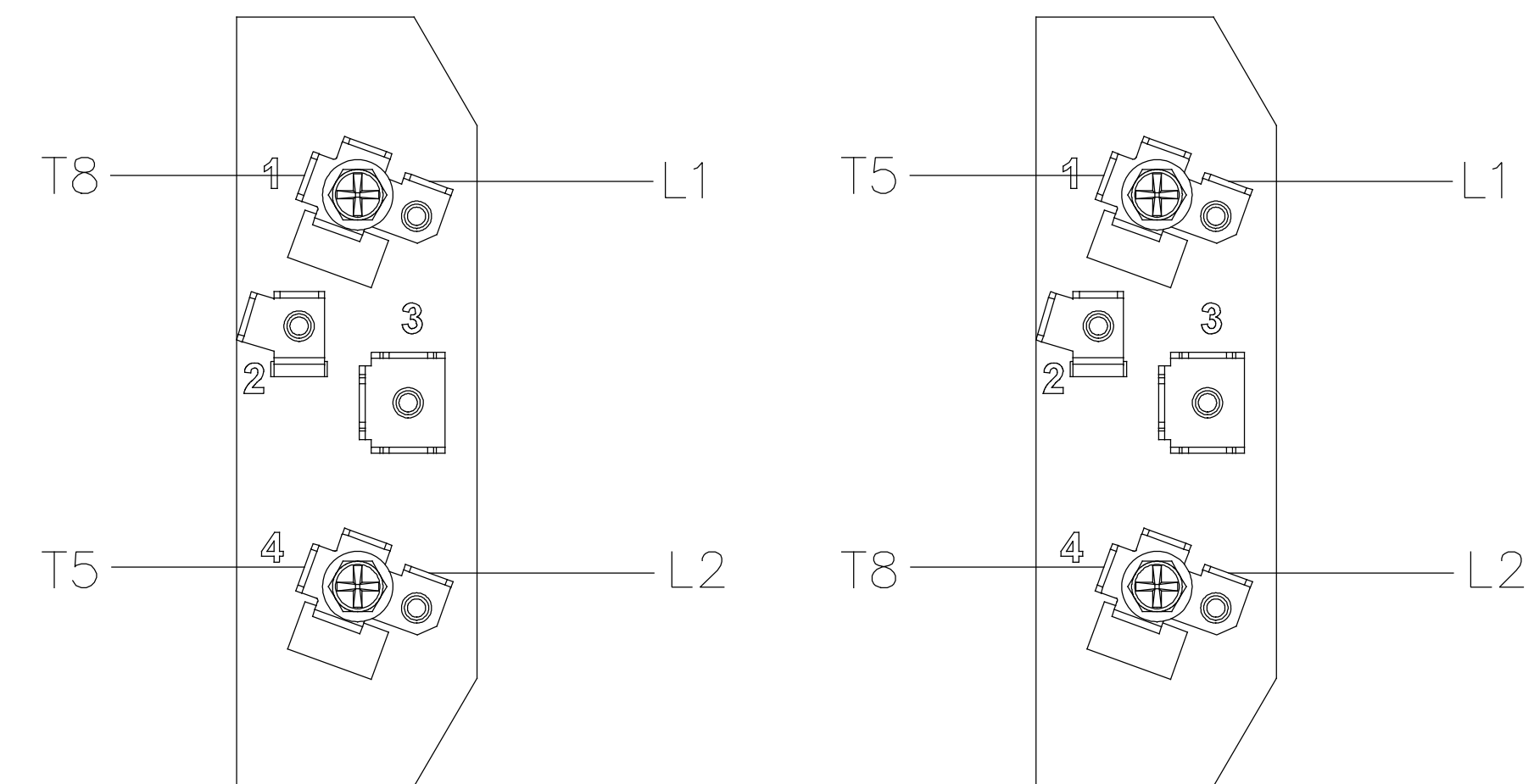
LINE LEADS



CONNECT T1 & T4 LEADS TO UNDERSIDE OF TERMINAL BOARD

C.C.W.LE ROTATION

C.W.LE ROTATION



ORACLE REV  
005

				TOLERANCES UNLESS OTHERWISE SPECIFIED		<b>LEESON</b> ELECTRIC CORPORATION			
				DECIMALS					
E	ADDED NOTE FOR T1 & T4 PER ECO-0138106	ARV	1/17/18	.00	± .01	DRAWN PG 10/20/82	TITLE EXTERNAL WIRING DIAGRAM		
D	UPDATED DRAWING PER ECO-0138043	ARV	1/16/18	.000	± .005	CH'K'D. RPB 10/20/82	TYPE "K" W/O PROTECTOR		
C	UPDATED DRAWING PER ECO-0085728	ARV	09/24/15	.0000	± .0005	APPR. JCW 10/20/82	MAT'L. DECAL - <b>BRF</b>		
NO.	REVISION	BY	DATE	FRACTIONS	± 1/64	SCALE 1=1			
THIS DRAWING IN DESIGN AND DETAIL IS OUR PROPERTY AND MUST NOT BE USED EXCEPT IN CONNECTION WITH OUR WORK ALL RIGHTS OF DESIGN AND INVENTION ARE RESERVED				ANGLES	± 1/2°	REF. 005018-P5	FINISH TAYLOR	SIZE A	DRAWING NO. 005018-09
				INCH/MM		FMF	FREEZER		



**1051 CHEYENNE AVE.  
GRAFTON, WI 53024  
PH. 262-377-8810**

**CERTIFICATION DATA SHEET**

**CATALOG #:** 120376.00

**CONN. DIAGRAM:** 005018.09

**OUTLINE:** 028649-850B

**MOUNTING:** F1 ONLY

**WINDING #:** K632141 NR 2 B

**TYPICAL MOTOR PERFORMANCE DATA**

HP	kW	SYNC. RPM	F.L. RPM	FRAME	ENCLOSURE	KVA CODE	DESIGN
3	2.24	3600	3450	145T	TEAO	J	L

PH	Hz	VOLTS	AMPS	START TYPE	DUTY	INSL	S.F.	AMB°C
1	60	230	12.8	ACROSS THE LINE	CONTINUOUS	F4	1.0	40

FULL LOAD EFF:	82.5	3/4 LOAD EFF:	82	1/2 LOAD EFF:	75	GTD. EFF	ELEC. TYPE
FULL LOAD PF:	92	3/4 LOAD PF:	89.7	1/2 LOAD PF:	85.2	80	CAP START CAP RUN

F.L. TORQUE	LOCKED ROTOR AMPS	L.R. TORQUE	B.D. TORQUE	F.L. RISE°C
4.5 LB-FT	95	7.6 LB-FT 169 %	12.1 LB-FT 269 %	50

SOUND PRESSURE @ 3 FT.	SOUND POWER	ROTOR WK^2	MAX. WK^2	SAFE STALL TIME	STARTS / HOUR	APPROX. MOTOR WGT
0 dBA	10 dBA	0.095 LB-FT^2	0.1 LB-FT^2	0 SEC.	0	48 LBS.

**\*\*\* SUPPLEMENTAL INFORMATION \*\*\***

DE BRACKET TYPE	ODE BRACKET TYPE	MOUNT TYPE	ORIENTATION	SEVERE DUTY	HAZARDOUS LOCATION	DRIP COVER	SCREENS	PAINT
STANDARD	STANDARD	RIGID	HORIZONTAL	FALSE	NONE	FALSE	NONE	GRAY - LIGHT (EPOXY)

BEARINGS		GREASE	SHAFT TYPE	SPECIAL DE	SPECIAL ODE	SHAFT MATERIAL	FRAME MATERIAL
DE	ODE						
BALL	BALL	POLYREX EM	T	NONE	NONE	1144 STRESSPROOF (C-223)	ROLLED STEEL
6205	6203						

THERMO-PROTECTORS				THERMISTORS	CONTROL	SPACE HEATERS
THERMOSTATS	PROTECTORS	WDG RTDs	BRG RTDs			
NONE	NOT	NONE	NONE	NONE	FALSE	NONE VOLTS

\*  
N  
O  
T  
E  
S  
\*

<b>INVERTER TORQUE:</b> NONE
<b>INV. HP SPEED RANGE:</b> NONE
<b>ENCODER:</b> NONE NONE NONE NONE NONE PPR
<b>BRAKE:</b> NONE NONE NONE P/N NONE NONE NONE NONE FT-LB NONE V NONE Hz



**LEESON ELECTRIC CORPORATION**  
 TYPICAL PERFORMANCE CURVE for AC MOTOR

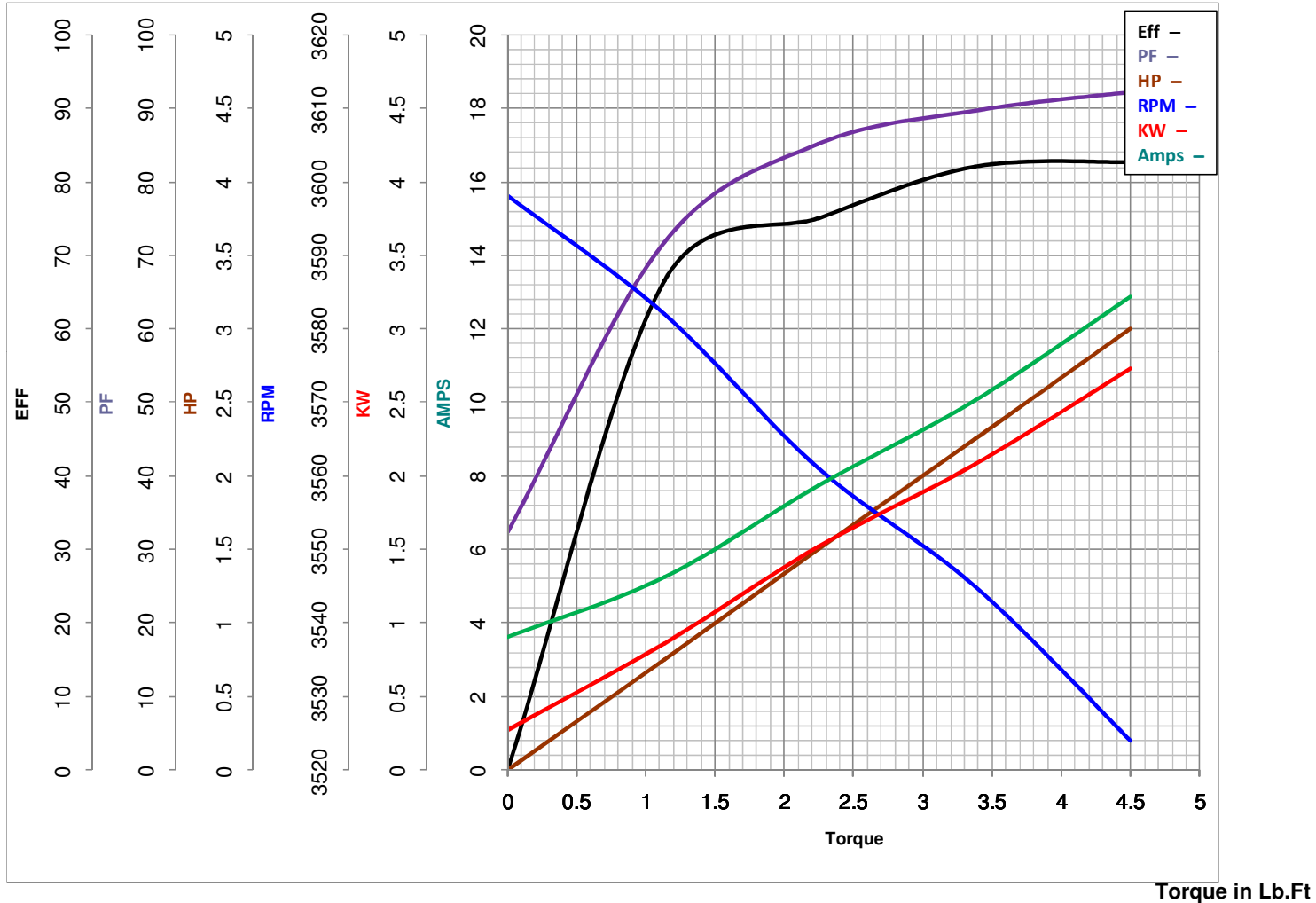
Curve at 230 Volts      HP 3.00      PHASE 1  
60 HZ  
3 HP      VOLTS 230

Model No 120376.00

Catalog No 120376.00

HZ 60

RPM 3450



<b>FL TORQUE</b>	<u>4.5</u>	Lb.Ft	<b>FL AMPS</b>	<u>12.8</u>	
<b>BD TORQUE</b>	<u>12.1</u>	Lb.Ft	<b>PU TORQUE</b>	<u>7.0</u>	Lb.Ft
<b>LR TORQUE</b>	<u>7.6</u>	Lb.Ft	<b>LR AMPS</b>	<u>95</u>	
<b>WINDING</b>	K632141-2		<b>Date</b>	<u>3/15/2018</u>	