

PRODUCT INFORMATION PACKET

Model No: 100604.00

Catalog No: 100604.00

0.33 HP Agricultural Motor, 1 phase, 1200 RPM, 115/208-230 V, 56Z Frame, TEAO



Regal and are trademarks of Regal Rexnord Corporation or one of its affiliated companies.

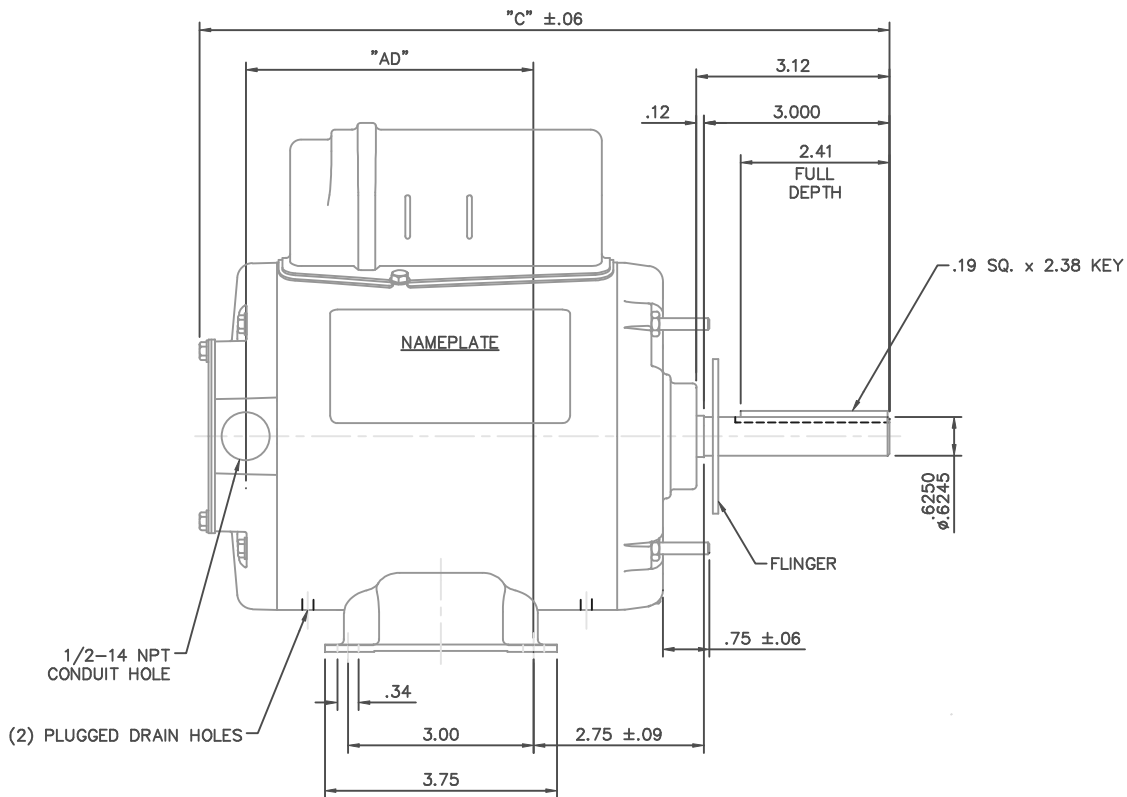
©2022 Regal Rexnord Corporation, All Rights Reserved. MC017097E

Nameplate Specifications

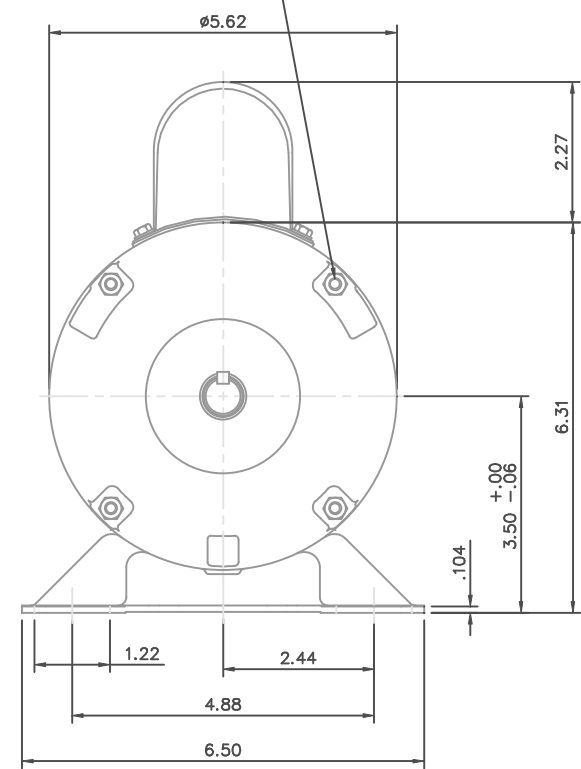
| | | | |
|------------------------|----------------------|----------------------------|----------------------------------|
| Output HP | 0.33 Hp | Output KW | 0.25 kW |
| Frequency | 60 Hz | Voltage | 115/208-230 V |
| Current | 3.6/1.9-1.8 A | Speed | 1140 rpm |
| Service Factor | 1 | Phase | 1 |
| Efficiency | 70 % | Power Factor | 92 |
| Duty | Continuous | Insulation Class | B |
| Design Code | N | KVA Code | D |
| Frame | S56Z | Enclosure | Totally Enclosed Air Over |
| Thermal Protection | Automatic | Ambient Temperature | 40 °C |
| Drive End Bearing Size | 6203 | Opp Drive End Bearing Size | 6203 |
| UL | Recognized | CSA | Y |
| CE | N | IP Code | 43 |
| Number of Speeds | 1 | | |

Technical Specifications

| | | | |
|-----------------------|----------------------------------|-----------------------|-----------------------------------|
| Electrical Type | Permanent Split Capacitor | Starting Method | Across The Line |
| Poles | 6 | Rotation | Selective Counterclockwise |
| Resistance Main | 9.88 Ohms | Mounting | Rigid Base |
| Motor Orientation | Horizontal | Drive End Bearing | Ball |
| Opp Drive End Bearing | Ball | Frame Material | Rolled Steel |
| Shaft Type | Single Special Extension | Overall Length | 11.40 in |
| Frame Length | 5.75 in | Shaft Diameter | 0.625 in |
| Shaft Extension | 3.12 in | Assembly/Box Mounting | F1 ONLY |
| Outline Drawing | 031711-575 | Connection Drawing | 005109.15 |




10-32 UNF 2A THRU BOLTS
(4) REQ'D. ON A Ø5.125 B.C.

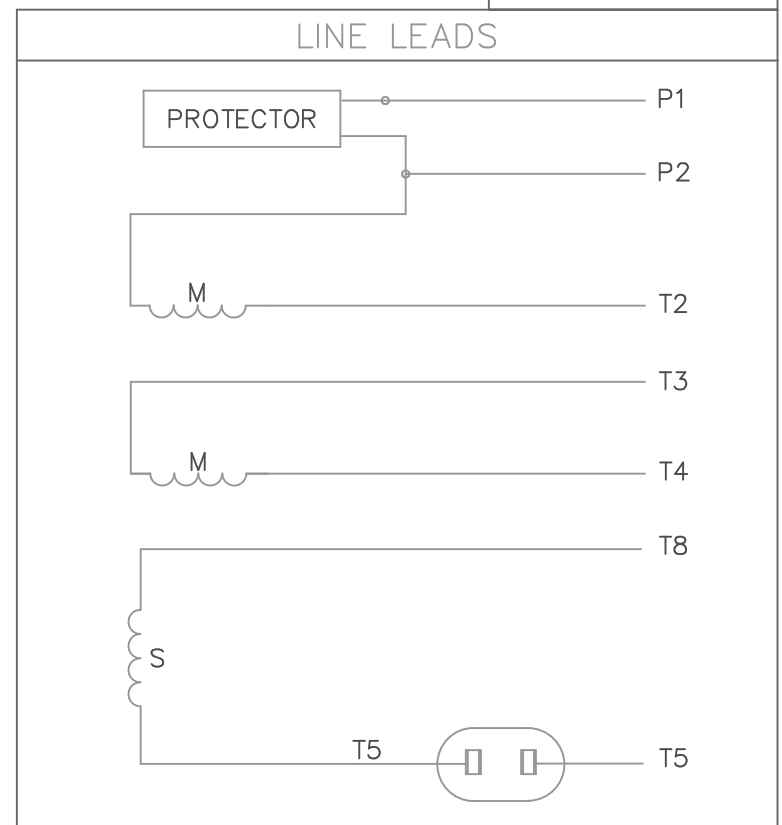
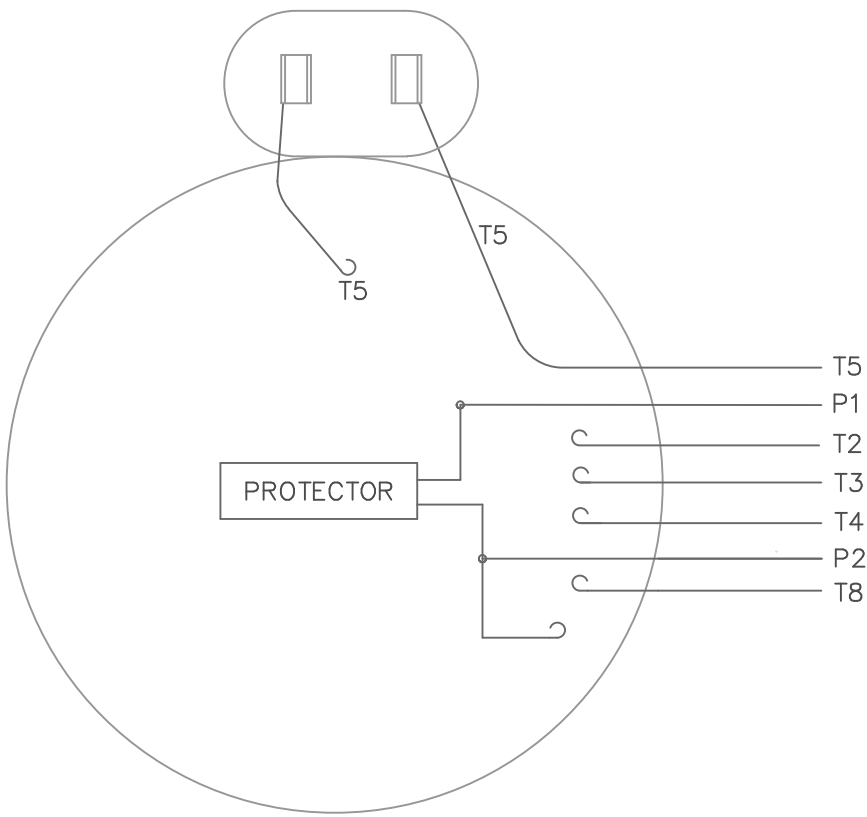


| DASH NO. | "C" | "AD" |
|----------|-------|------|
| 550 | 11.15 | 4.65 |
| 575 | 11.40 | 4.90 |
| 600 | 11.65 | 5.15 |
| 625 | 11.90 | 5.40 |
| 650 | 12.15 | 5.65 |
| 675 | 12.40 | 5.90 |
| 700 | 12.65 | 6.15 |


GASKETS THROUGHOUT

| | | | | | | | | |
|--|----------|-----------------------------|---------------|---|-----------------|--------|--------------------|------|
| | | TOLERANCES UNLESS SPECIFIED | |  ELECTRIC MOTORS GEARMOTORS AND DRIVES | DRAWN PG 8/8/02 | | | |
| | | DEC. | INCHES | | CHK | | | |
| | | .X | ±.1 | | APPD | | | |
| | | .XX | ±.03 | | SCALE 1=2 | | | |
| | | .XXX | ±.005 | | REF 030422 | | | |
| | | .XXXX | ±.0005 | MAT'L | FMF 100804.00 | | | |
| NO. | REVISION | BY & DATE | CHK ANG ±1/2' | FINISH | PREV | | | |
| THIS DRAWING IN DESIGN AND DETAIL IS OUR PROPERTY AND MUST NOT BE USED EXCEPT IN CONNECTION WITH OUR WORK ALL RIGHTS OF DESIGN AND INVENTION ARE RESERVED THIS IS AN ELECTRONICALLY GENERATED DOCUMENT - DO NOT SCALE THIS PRINT | | | | RFP | CAD FILE 031711 | SIZE B | DRAWING NO. 031711 | REV. |
| | | | | DIST | | | | |

VIEW FROM OUTSIDE OF MOTOR AT SWITCH END.



| | ROTATION FACING LEAD END | L1 | L2 | JOIN | INSULATE SEPARATELY |
|-----------|--------------------------|----|--------------|--------------|---------------------|
| HIGH VOLT | C.C.W. | P1 | T4 T5 | T2, T3 T8 | P2 |
| | C.W. | P1 | T4 T8 | T2, T3 T5 | P2 |
| LOW VOLT | C.C.W. | P1 | T2, T4 T5 | P2, T3 T8 | -- |
| | C.W. | P1 | T2, T4 T8 | P2, T3 T5 | -- |

| | | | | | | | |
|--|----------|-----------------------------|--------|---|----------|-----------------|-------------|
| | | TOLERANCES UNLESS SPECIFIED | |  ELECTRIC MOTORS GEARMOTORS AND DRIVES | | DRAWN PG 3/4/02 | |
| | | DEC. | INCHES | | | CHK | |
| | | .X | ±.1 | | | APPD | |
| | | .XX | ±.01 | | | SCALE 1=1 | |
| | | .XXX | ±.005 | | | REF 005109-01 | |
| | | .XXXX | ±.0005 | MAT'L. DECAL - 004011 | | FMF 102675 | |
| NO. | REVISION | BY & DATE | CHK | ANG ±1/2' | FINISH | PREV | |
| THIS DRAWING IN DESIGN AND DETAIL IS OUR PROPERTY AND MUST NOT BE USED EXCEPT IN CONNECTION WITH OUR WORK ALL RIGHTS OF DESIGN AND INVENTION ARE RESERVED THIS IS AN ELECTRONICALLY GENERATED DOCUMENT - DO NOT SCALE THIS PRINT | | | RFP | CAD FILE | 00510915 | SIZE | DRAWING NO. |
| | | | DIST | | | A | 005109-15 |
| | | | | | | | REV. |



**1051 CHEYENNE AVE.
GRAFTON, WI 53024
PH. 262-377-8810**

CONN. DIAGRAM: 005109.15
OUTLINE: 031711-575
WINDING #: PE4862007 NR 3 B

CATALOG #: 100604.00
MOUNTING: F1 ONLY

TYPICAL MOTOR PERFORMANCE DATA

| HP | kW | SYNC. RPM | F.L. RPM | FRAME | ENCLOSURE | KVA CODE | DESIGN |
|-----|------|-----------|----------|-------|-----------|----------|--------|
| 1/3 | 0.25 | 1200 | 1140 | S56Z | TEAO | D | N |

| PH | Hz | VOLTS | AMPS | START TYPE | DUTY | INSL | S.F. | AMB°C |
|----|----|-------------|-------------|-----------------|------------|------|------|-------|
| 1 | 60 | 115/208-230 | 3.6/1.9-1.8 | ACROSS THE LINE | CONTINUOUS | B3 | 1.0 | 40 |

| FULL LOAD EFF: | 70 | 3/4 LOAD EFF: | 66.1 | 1/2 LOAD EFF: | 56.8 | GTD. EFF | ELEC. TYPE |
|----------------|----|---------------|------|---------------|------|----------|-------------|
| FULL LOAD PF: | 92 | 3/4 LOAD PF: | 89.4 | 1/2 LOAD PF: | 84.3 | 66 | PSC 1 SPEED |

| F.L. TORQUE | LOCKED ROTOR AMPS | L.R. TORQUE | B.D. TORQUE | F.L. RISE°C |
|-------------|-------------------|-----------------|----------------|-------------|
| 24.73 OZ-FT | 12 / 6 | 13.5 OZ-FT 56 % | 48 OZ-FT 200 % | - |

| SOUND PRESSURE @ 3 FT. | SOUND POWER | ROTOR WK^2 | MAX. WK^2 | SAFE STALL TIME | STARTS / HOUR | APPROX. MOTOR WGT |
|------------------------|-------------|---------------|-------------|-----------------|---------------|-------------------|
| 0 dBA | 10 dBA | 0.053 LB-FT^2 | 0.1 LB-FT^2 | 10 SEC. | 0 | 26 LBS. |

***** SUPPLEMENTAL INFORMATION *****

| DE BRACKET TYPE | ODE BRACKET TYPE | MOUNT TYPE | ORIENTATION | SEVERE DUTY | HAZARDOUS LOCATION | DRIP COVER | SCREENS | PAINT |
|-----------------|------------------|------------|-------------|-------------|--------------------|------------|---------|--------------|
| STANDARD | STANDARD | RIGID | HORIZONTAL | FALSE | NONE | FALSE | NONE | GRAY - LIGHT |

| BEARINGS | | GREASE | SHAFT TYPE | SPECIAL DE | SPECIAL ODE | SHAFT MATERIAL | FRAME MATERIAL |
|----------|------|------------|-------------|---------------------|-------------|--------------------------|----------------|
| DE | ODE | | | | | | |
| BALL | BALL | BEACON 325 | SGL SPL EXT | 0.625 x 3.00 IN SEK | NONE | 1144 STRESSPROOF (C-223) | ROLLED STEEL |
| 6203 | 6203 | | | | | | |

| THERMO-PROTECTORS | | | | THERMISTORS | CONTROL | SPACE HEATERS |
|-------------------|------------|----------|----------|-------------|---------|---------------|
| THERMOSTATS | PROTECTORS | WDG RTDs | BRG RTDs | | | |
| NONE | AUTOMATIC | NONE | NONE | NONE | FALSE | NONE VOLTS |

| |
|----------------------------------|
| INVERTER TORQUE: NONE |
| INV. HP SPEED RANGE: NONE |
| ENCODER: NONE |
| NONE NONE |
| NONE NONE PPR |
| BRAKE: NONE NONE |
| NONE P/N NONE |
| NONE NONE |
| NONE FT-LB NONE V NONE Hz |

*
N
O
T
E
S
*



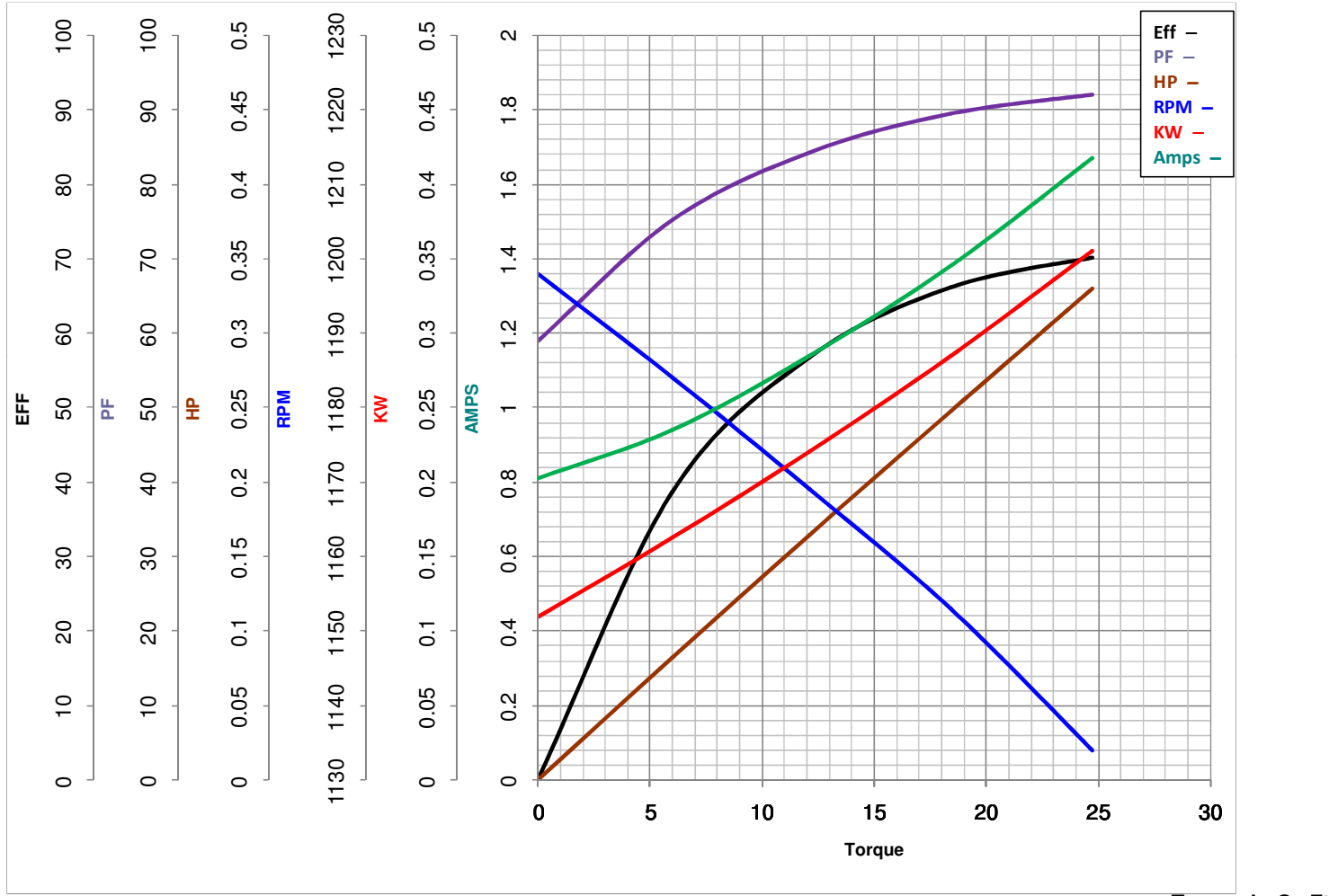
LEESON ELECTRIC CORPORATION
 TYPICAL PERFORMANCE CURVE for AC MOTOR

Model No 100604.00

Catalog No 100604.00

Curve at 230 Volts HP 0.34 PHASE 1
60 HZ
0.33 HP VOLTS 115/208-230

HZ 60 RPM 1140



| | | | |
|------------------|--------------------|------------------|--------------------|
| FL TORQUE | <u>24.73</u> Oz.Ft | FL AMPS | <u>3.6/1.9-1.8</u> |
| BD TORQUE | <u>48.0</u> Oz.Ft | PU TORQUE | <u>12.5</u> Oz.Ft |
| LR TORQUE | <u>13.5</u> Oz.Ft | LR AMPS | <u>6</u> |
| WINDING | PE4862007-3 | Date | 3/13/2018 |