

PRODUCT INFORMATION PACKET

Model No: 111322.00

Catalog No: 111322.00

0.75 HP Agricultural Motor, 1 phase, 1200 RPM, 115/230 V, 56HZ Frame, TEAO



Regal and are trademarks of Regal Rexnord Corporation or one of its affiliated companies.
©2022 Regal Rexnord Corporation, All Rights Reserved. MC017097E

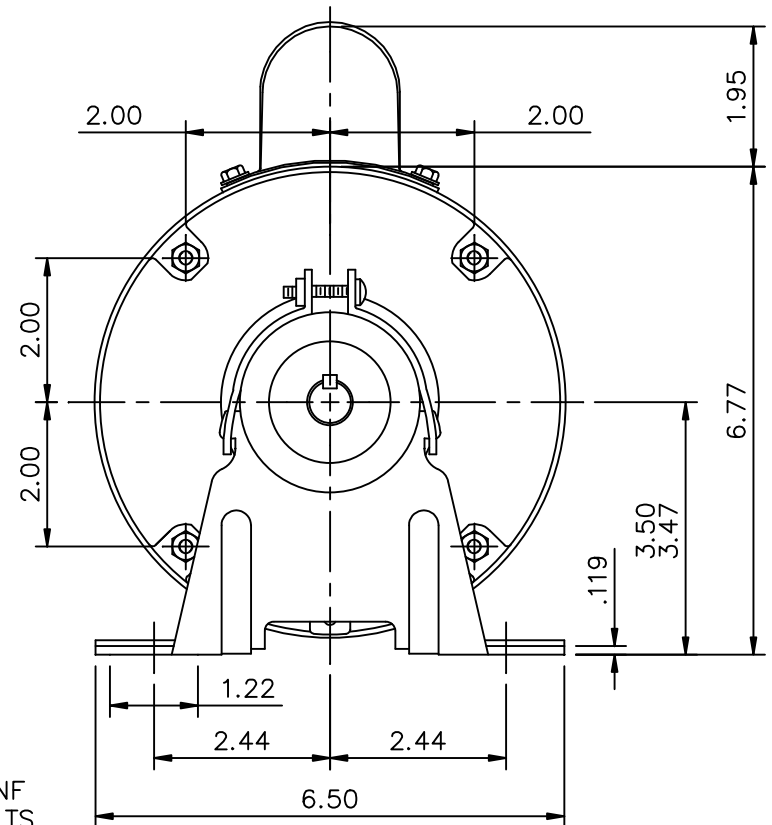
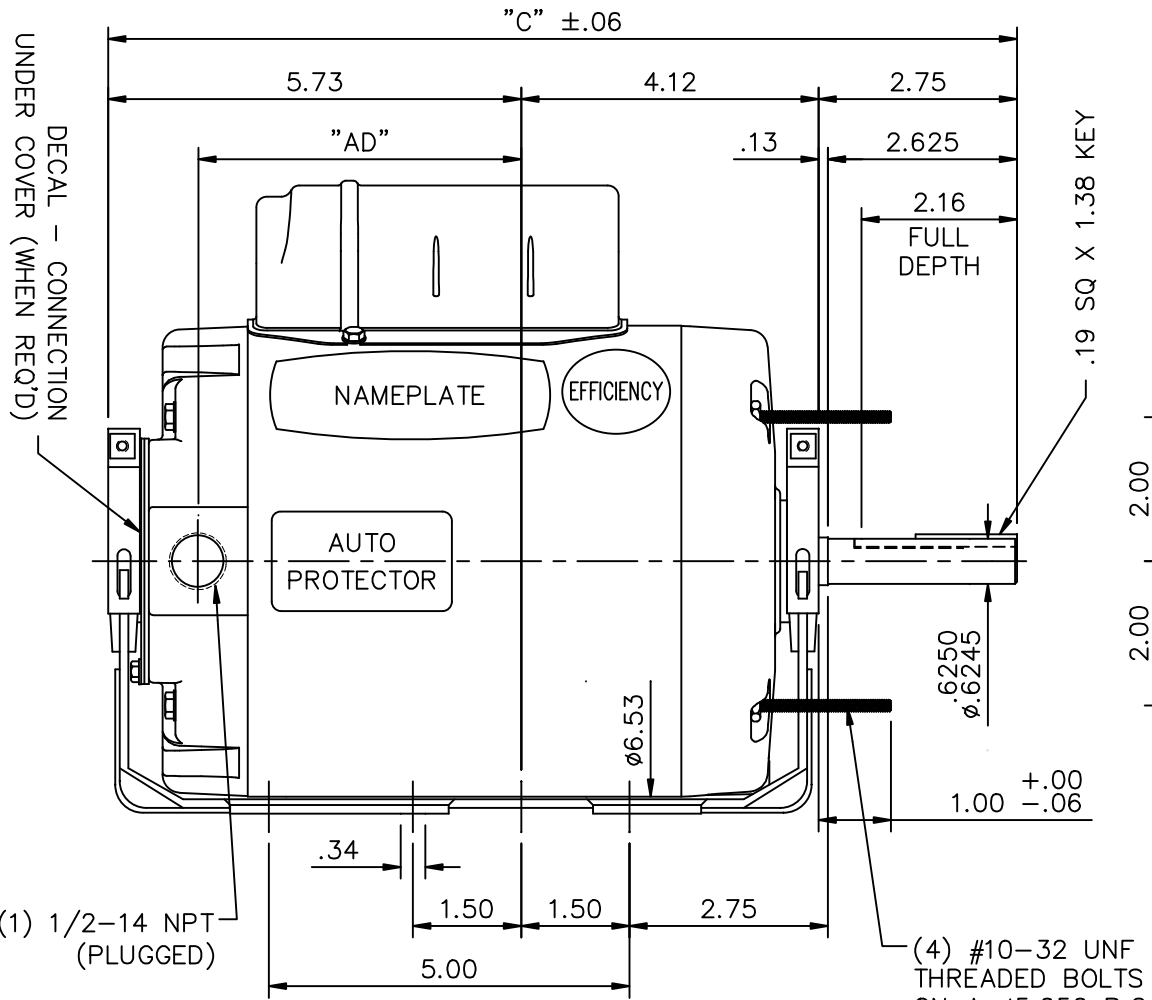
Nameplate Specifications

Output HP	0.75 Hp	Output KW	0.56 kW
Frequency	60 Hz	Voltage	115/230 V
Current	8.0/4.0 A	Speed	1075 rpm
Service Factor	1	Phase	1
Efficiency	70 %	Power Factor	84
Duty	Continuous	Insulation Class	B
Design Code	NO DESIGN CODE	KVA Code	D
Frame	56HZ	Enclosure	Totally Enclosed Air Over
Thermal Protection	Automatic	Ambient Temperature	40 °C
Drive End Bearing Size	6203	Opp Drive End Bearing Size	6203
UL	Recognized	CSA	Y
CE	N	IP Code	43
Number of Speeds	1		

Technical Specifications

Electrical Type	Permanent Split Capacitor	Starting Method	Across The Line
Poles	6	Rotation	Selective Counterclockwise
Resistance Main	3 Ohms	Mounting	Resilient Base
Motor Orientation	Horizontal	Drive End Bearing	Ball
Opp Drive End Bearing	Ball	Frame Material	Rolled Steel
Shaft Type	Single Special Extension	Overall Length	14.10 in
Frame Length	7.50 in	Shaft Diameter	0.625 in
Shaft Extension	2.75 in	Assembly/Box Mounting	F1 ONLY
Outline Drawing	028761-750	Connection Drawing	005109.01

This is an uncontrolled document once printed or downloaded and is subject to change without notice. Date Created:06/08/2022

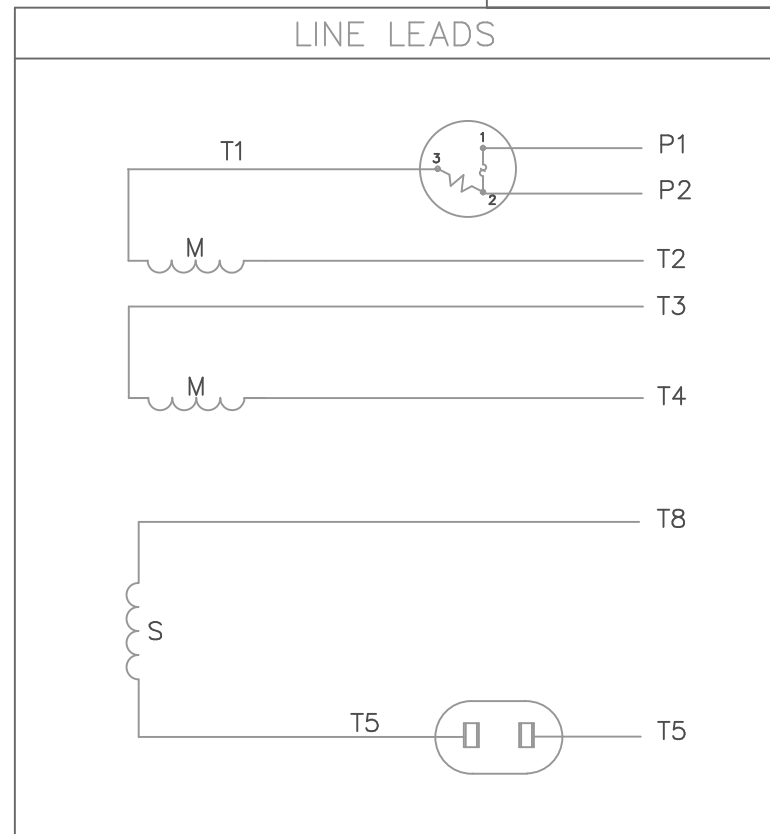
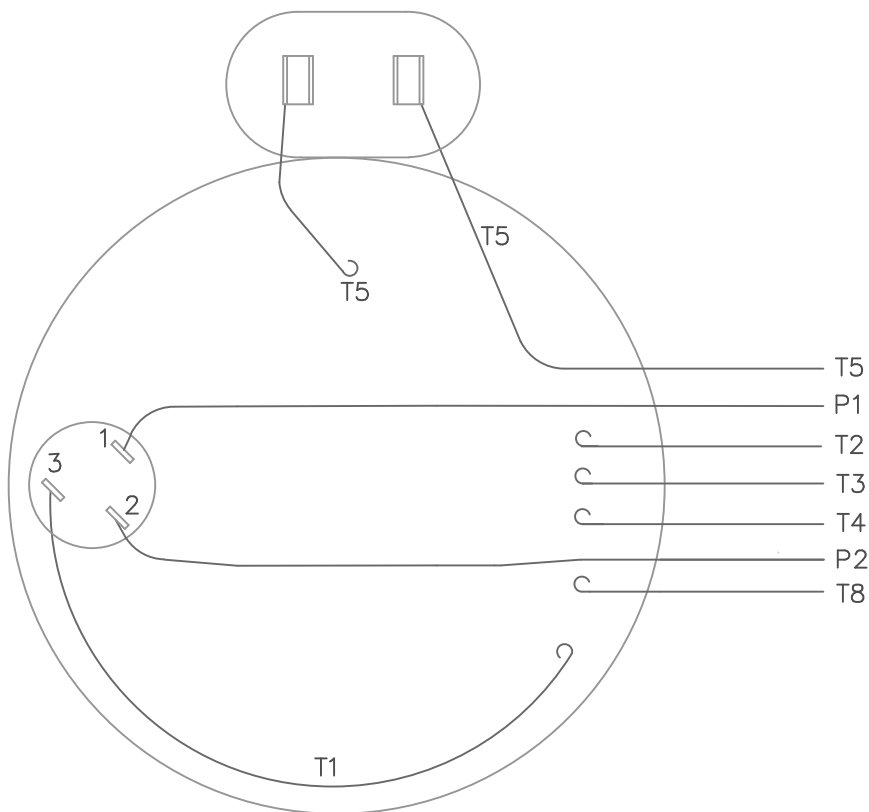


DASH NO.	"C"	"AD"
550	12.10	3.97
600	12.60	4.47
650	13.10	4.97
700	13.60	5.47
750	14.10	5.97

GASKETS THROUGHOUT

NO.	REVISION	BY & DATE	TOLERANCES UNLESS SPECIFIED		FINISH	DRAWN RDW 8/29/06	
			DEC.	INCHES			
			.X	±.1	LEESON ELECTRIC MOTORS GEARMOTORS AND DRIVES TITLE OUTLINE - 56HZ FRAME TENV - RESILIENT MAT'L. RFP 8/29/06 CAD FILE 028761 DIST	CHK	
			.XX	±.03		APPD KH 8/29/06	
			.XXX	±.005		SCALE 3=8	
			.XXXX	±.0005		REF 033463	
				±1/2'		FMF 111322	
					PREV		
THIS DRAWING IN DESIGN AND DETAIL IS OUR PROPERTY AND MUST NOT BE USED EXCEPT IN CONNECTION WITH OUR WORK ALL RIGHTS OF DESIGN AND INVENTION ARE RESERVED THIS IS AN ELECTRONICALLY GENERATED DOCUMENT - DO NOT SCALE THIS PRINT 4/8/2011 11:10:40 AM						DRAWING NO. 028761	REV.

VIEW FROM OUTSIDE OF MOTOR AT SWITCH END.



	ROTATION FACING LEAD END	L1	L2	JOIN	INSULATE SEPARATELY
HIGH VOLT	C.C.W.	P1	T4 T5	T2, T3 T8	P2
	C.W.	P1	T4 T8	T2, T3 T5	P2
LOW VOLT	C.C.W.	P1	T2, T4 T5	P2, T3 T8	--
	C.W.	P1	T2, T4 T8	P2, T3 T5	--

				TOLERANCES UNLESS OTHERWISE SPECIFIED			LEESON ELECTRIC CORPORATION						
				DEC.	INCHES	METRIC							
				.X	±	±	DRAWN JRW 10/01/75		TITLE EXTERNAL WIRING DIAGRAM TYPE "P" W/PROTECTOR				
				.XX	±	±	APPR. JBM 10/02/75						
08	REDRAWN ON CAD	DBT 05/28/97		.XXX	±	±	R.F.P.		MAT'L. DECAL - 004011 BRF				
NO.	REVISION	BY & DATE	CH'K'D.	.XXXX	±	±	SCALE 1=1						
THIS DRAWING IN DESIGN AND DETAIL IS OUR PROPERTY AND MUST NOT BE USED EXCEPT IN CONNECTION WITH OUR WORK ALL RIGHTS OF DESIGN AND INVENTION ARE RESERVED THIS IS AN ELECTRONICALLY GENERATED DOCUMENT - DO NOT SCALE THIS PRINT				FRACTIONS	±		REF.	005003	FINISH	REV.	08	DRAWING NO.	005109-01
				ANGLES	±		FMF	W-P5567					



1051 CHEYENNE AVE.
GRAFTON, WI 53024
PH. 262-377-8810

CERTIFICATION DATA SHEET

CONN. DIAGRAM: 005109.01
OUTLINE: 028761-750
WINDING #: P63637 NR 3 A

CATALOG #: 111322.00
MOUNTING: F1 ONLY

TYPICAL MOTOR PERFORMANCE DATA

HP	kW	SYNC. RPM	F.L. RPM	FRAME	ENCLOSURE	KVA CODE	DESIGN
3/4	0.56	1200	1075	56HZ	TEAO	D	NO DESIGN CODE

PH	Hz	VOLTS	AMPS	START TYPE	DUTY	INSL	S.F.	AMB°C
1	60	115/230	8/4	ACROSS THE LINE	CONTINUOUS	B4	1.0	40

FULL LOAD EFF:	70	3/4 LOAD EFF:	66.2	1/2 LOAD EFF:	56.3	GTD. EFF	ELEC. TYPE
FULL LOAD PF:	84	3/4 LOAD PF:	83.5	1/2 LOAD PF:	78.9	64	PSC 1 SPEED

F.L. TORQUE	LOCKED ROTOR AMPS	L.R. TORQUE	B.D. TORQUE	F.L. RISE°C
54 OZ-FT	29 / 14.5	40 OZ-FT 75 %	115 OZ-FT 213 %	0

SOUND PRESSURE @ 3 FT.	SOUND POWER	ROTOR WK^2	MAX. WK^2	SAFE STALL TIME	STARTS / HOUR	APPROX. MOTOR WGT
0 dBA	10 dBA	0.16 LB-FT^2	0 LB-FT^2	10 SEC.	0	47 LBS.

*** SUPPLEMENTAL INFORMATION ***

DE BRACKET TYPE	ODE BRACKET TYPE	MOUNT TYPE	ORIENTATION	SEVERE DUTY	HAZARDOUS LOCATION	DRIP COVER	SCREENS	PAINT
STANDARD	STANDARD	RESILIENT BASE	HORIZONTAL	FALSE	NONE	FALSE	NONE	GRAY - LIGHT (EPOXY)

BEARINGS		GREASE	SHAFT TYPE	SPECIAL DE	SPECIAL ODE	SHAFT MATERIAL	FRAME MATERIAL
DE	ODE						
BALL	BALL	POLYREX EM	SGL SPL EXT	SPECIAL	NONE	1144 STRESSPROOF (C-223)	ROLLED STEEL
6203	6203						

THERMO-PROTECTORS				THERMISTORS	CONTROL	SPACE HEATERS
THERMOSTATS	PROTECTORS	WDG RTDs	BRG RTDs			
NONE	AUTOMATIC	NONE	NONE	NONE	FALSE	NONE VOLTS

*
N
O
T
E
S
*

INVERTER TORQUE: NONE
INV. HP SPEED RANGE: NONE
ENCODER: NONE NONE NONE NONE NONE PPR
BRAKE: NONE NONE NONE P/N NONE NONE NONE NONE FT-LB NONE V NONE Hz

