

PRODUCT INFORMATION PACKET



Model No: 113290.00

Catalog No: 113290.00

0.33 HP Agricultural Motor, 1 phase, 1800 RPM, 115/208-230 V, 56C Frame, TEFC
Agricultural Motors



Regal and Leeson are trademarks of Regal Rexnord Corporation or one of its affiliated companies.

©2021 Regal Rexnord Corporation, All Rights Reserved. MC017097E



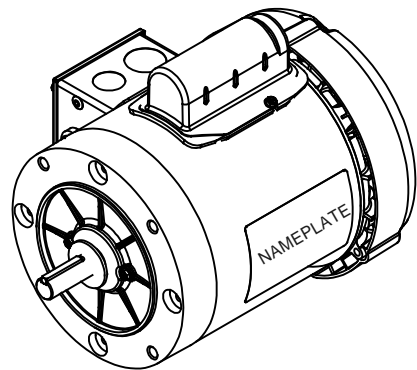


Nameplate Specifications

Output HP	0.33 Hp	Output KW	0.25 kW
Frequency	60 Hz	Voltage	115/208-230 V
Current	6.4/3.4-3.2 A	Speed	1725 rpm
Service Factor	1.15	Phase	1
Efficiency	62 %	Power Factor	55
Duty	Continuous	Insulation Class	B
Design Code	N	KVA Code	M
Frame	56C	Enclosure	Totally Enclosed Fan Cooled
Thermal Protection	Manual	Ambient Temperature	40 °C
Drive End Bearing Size	6203	Opp Drive End Bearing Size	6203
UL	Recognized	CSA	Y
CE	N	IP Code	43
Number of Speeds	1		



Technical Specifications

Electrical Type	Capacitor Start Induction Run	Starting Method	Across The Line
Poles	4	Rotation	Selective Counterclockwise
Resistance Main	0 Ohms	Mounting	Round
Motor Orientation	Horizontal	Drive End Bearing	Ball
Opp Drive End Bearing	Ball	Frame Material	Rolled Steel
Shaft Type	NEMA 56	Overall Length	10.98 in
Frame Length	5.50 in	Shaft Diameter	0.625 in
Shaft Extension	1.88 in	Assembly/Box Mounting	F1 ONLY
Outline Drawing	028865-550A	Connection Drawing	005003.03

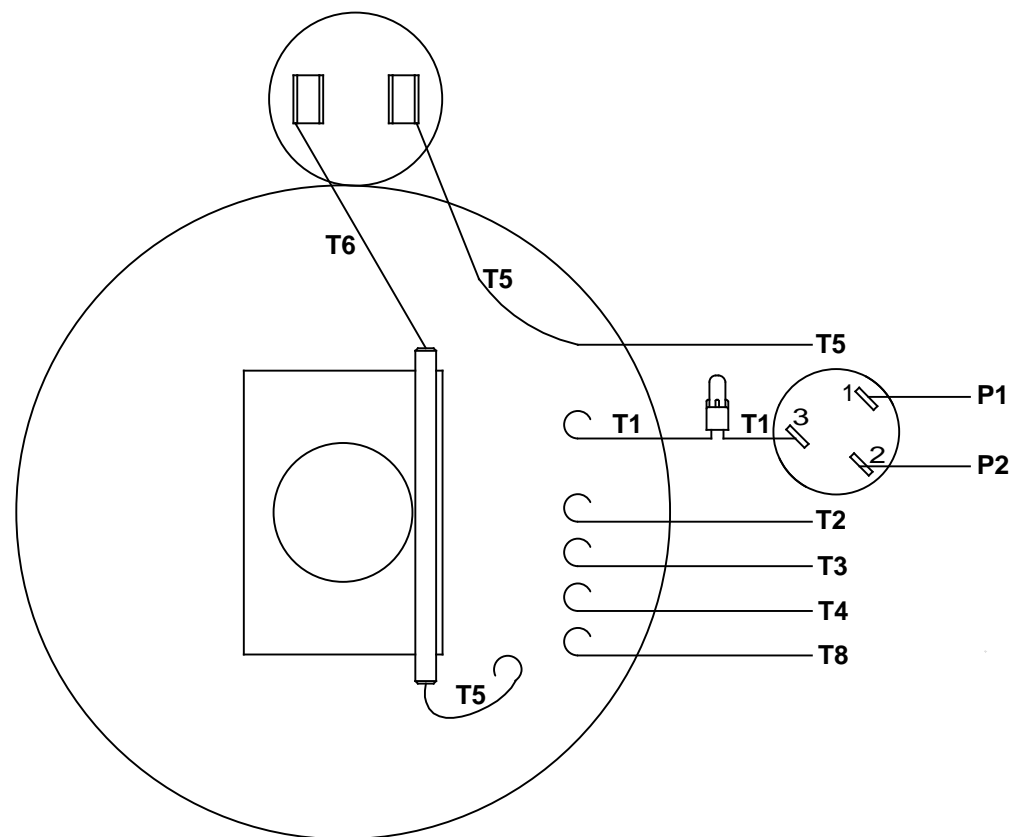


DASH NO.	"C"	"AD"	CAP DASH.	"XO"
550	10.98	5.19		
600	11.48	5.59		
650	11.98	6.19		
700	12.48	6.69		
750	12.98	7.19		
800	13.48	7.69	A	1.61
850	13.98	8.19	B	2.08
			C	2.32

NOTES:
1) GASKETS THROUGHOUT

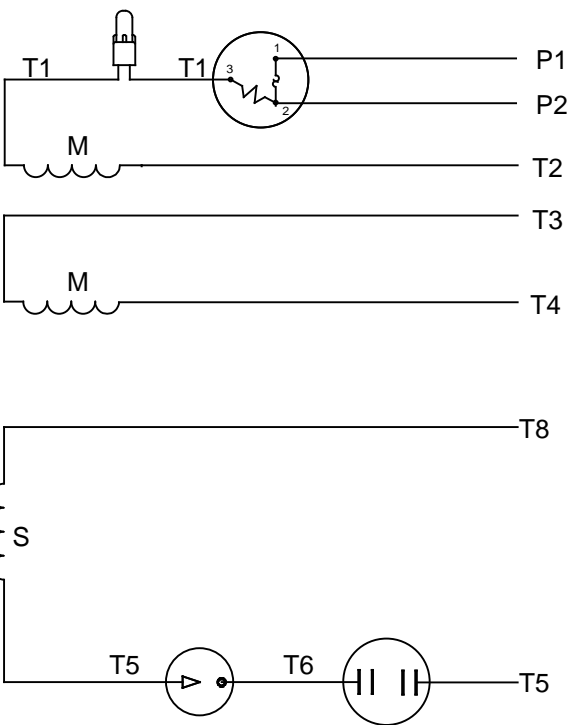
						TOLERANCES UNLESS SPECIFIED		ELECTRIC MOTORS GEARMOTORS AND DRIVES	DRAWN	GRB 08/18/2008
						DEC INCHES			CHK	DJ 08/18/2008
					X ±.1	TITLE OUTLINE - 56C FRAME TEFC - "C" FACE FARM DUTY			APPR	
					XX ±.03				SCALE 1:2	
					XXX ±.005				REF 033641	
									FMF 110492.00	
01	ADDED "XO" TABLE		GRB 12/10/2008	DJ	JXXXX ±.0005	MATL			PAGE	OF
NO	REVISION		BY & DATE	CHK	ANG ±1/2"	FINISH				
THIRD ANGLE PROJECTION 				RFP	08/18/2008	PREV	SIZE	DRAWING NO	REV	
				NETWORK FILE NAME			B	028865	0	

VIEW FROM OUTSIDE OF MOTOR AT SWITCH END


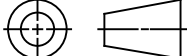


RBC PROPRIETARY AND CONFIDENTIAL INFORMATION
This document is the property of REGAL BELOIT CORPORATION ("RBC") including its subsidiaries and divisions and contains proprietary information of RBC. This document is loaned on the express condition that neither it nor the information contained therein shall be disclosed to others without the express written consent of RBC, and that the information shall be used by the recipient only as approved expressly by RBC. This document shall be returned to RBC upon its request. This document may be subject to certain restrictions under U.S. export control laws and regulations.

LINE LEADS



	ROTATION FACING LEAD END	L1	L2	JOIN	INSULATE SEPARATELY
HIGH VOLT	C.C.W.	P1	T4 T5	T2,T3 T8	P2
	C.W.	P1	T4 T8	T2,T3 T5	P2
LOW VOLT	C.C.W.	P1	T2,T4 T5	P2,T3 T8	---
	C.W.	P1	T2,T4 T8	P2,T3 T5	---

				TOLERANCES UNLESS SPECIFIED			ELECTRIC MOTORS GEARMOTORS AND DRIVES		DRAWN WLW 08/20/79				
				DEC	INCHES				CHK	ADN 08/27/76			
				.X	±.1				APPR	WRK 08/27/76			
				.XX	±.01	TITLE EXTERNAL WIRING DIAGRAM TYPE "C" W/PROTECTOR				SCALE	1:1		
06	REDRAWN IN SOLIDWORKS	VJB 7/22/2011		.XXX	±.005					REF			
05	REDRAWN ON CAD	DBT 05/27/97		.XXXX	±.0005	MAT'L DECAL - 004011				FMF			
NO	REVISION		BY & DATE	CHK	ANG	±1/2°	FINISH				PAGE	OF	
<div>THIRD ANGLE PROJECTION</div> 				RFP			PREV			SIZE	DRAWING NO		REV
				NETWORK FILE NAME			00500303			A	005003-03		06



LEESON ELECTRIC CORPORATION

TYPICAL PERFORMANCE CURVE for AC MOTOR

Model No 113290.00Catalog No 113290.00

Curve at

230

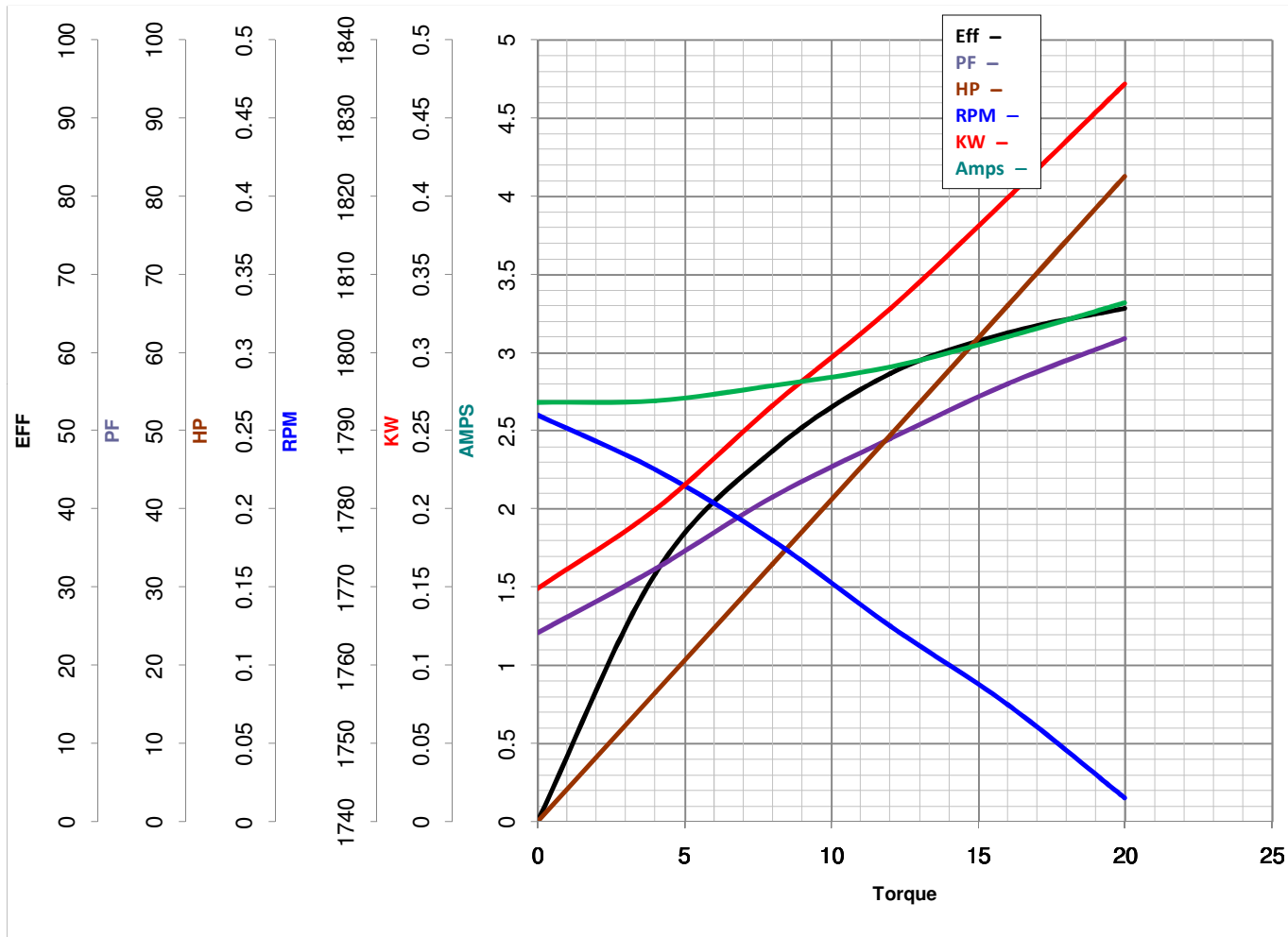
Volts

HP 0.34PHASE 160

HZ

0.33

HP

VOLTS 115/208-230HZ 60RPM 1725

Torque in Oz.Ft

FL TORQUE 16 Oz.FtBD TORQUE 49.6 Oz.FtLR TORQUE 60.5 Oz.Ft

WINDING C634260-3

FL AMPS 6.4/3.2PU TORQUE 46.0 Oz.FtLR AMPS 15.4

Date 3/23/2018