

PRODUCT INFORMATION PACKET



Model No: M099461.00
Catalog No: M099461.00
0.33 HP Agricultural Motor, 1 phase, 1200 RPM, 115/230 V, 48YZ Frame, TEAO
Agricultural Motors



Regal and Leeson are trademarks of Regal Rexnord Corporation or one of its affiliated companies.
©2021 Regal Rexnord Corporation, All Rights Reserved. MC017097E



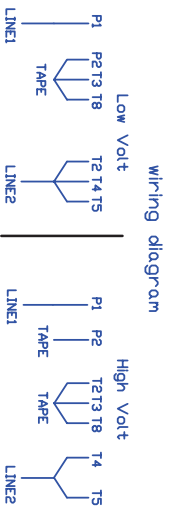
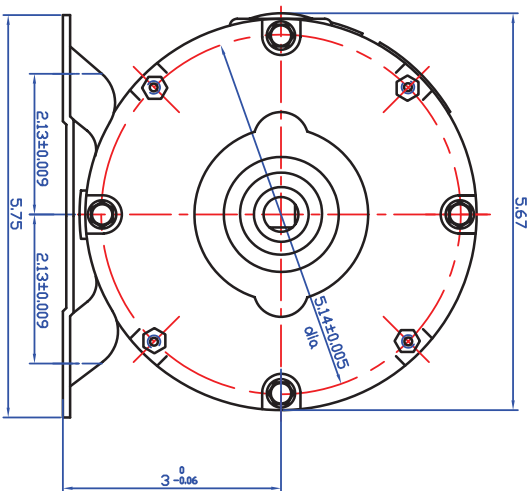


Nameplate Specifications

Output HP	0.33 Hp	Output KW	0.25 kW
Frequency	60 Hz	Voltage	115/230 V
Current	3.4/1.7 A	Speed	1060 rpm
Service Factor	1	Phase	1
Efficiency	67 %	Power Factor	89
Duty	Continuous	Insulation Class	F
Design Code	N	KVA Code	B
Frame	48YZ	Enclosure	Totally Enclosed Air Over
Thermal Protection	Automatic	Ambient Temperature	40 °C
Drive End Bearing Size	6203	Opp Drive End Bearing Size	6203
UL	Recognized	CSA	Y
CE	N	IP Code	43
Number of Speeds	1		

Technical Specifications

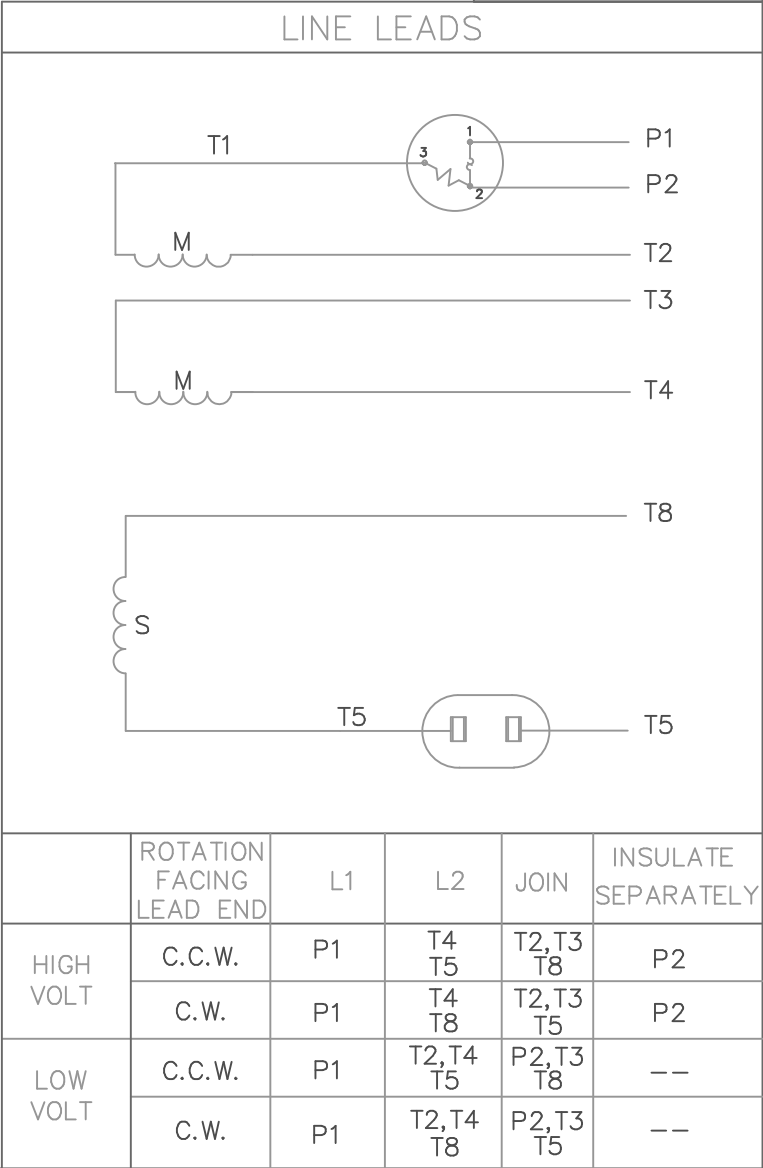
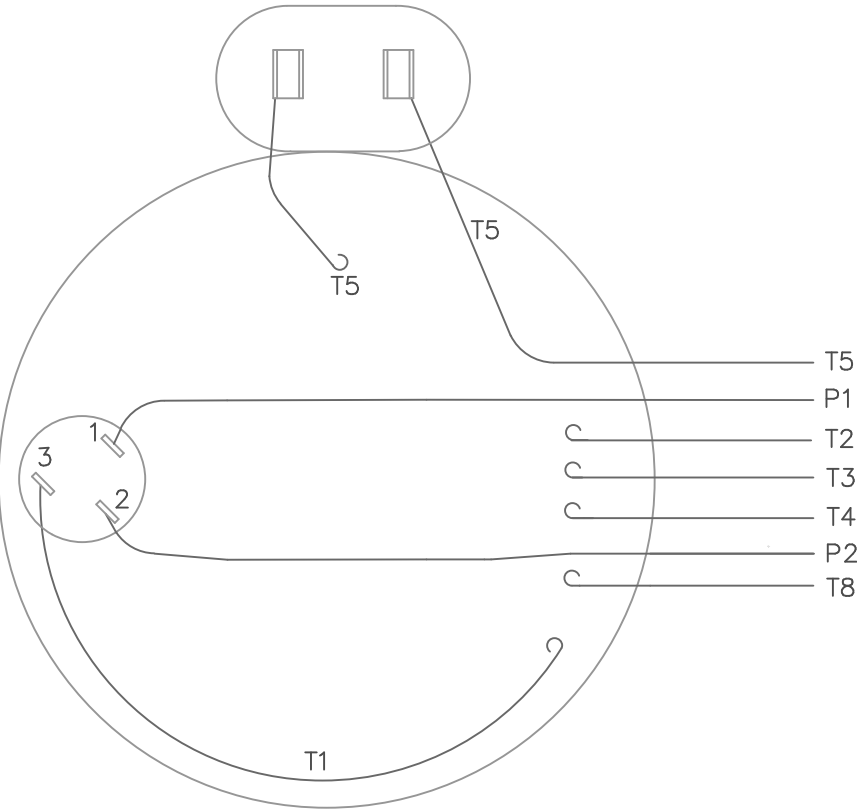
Electrical Type	Permanent Split Capacitor	Starting Method	Across The Line
Poles	6	Rotation	Selective Counterclockwise
Resistance Main	9.909 Ohms	Mounting	Rigid Base
Motor Orientation	Horizontal	Drive End Bearing	Ball
Opp Drive End Bearing	Ball	Frame Material	Rolled Steel
Shaft Type	Single Special Extension	Overall Length	11.69 in
Shaft Diameter	0.500 in	Shaft Extension	2.5 in
Assembly/Box Mounting	F1 Only		
Outline Drawing	M099461	Connection Drawing	005109.01



LESSON CAT. NO.	FRAME	PH	HP	H ₂	Pole	Volt	RPM	thermal protector	C
M059460	48	1	1/4	60	6	115/230	1075	MEG55AX	11.18
M059461	48	1	1/3	60	6	115/230	1075	MEG68RX	11.69
M059462	48	1	1/2	60	6	115/230	1075	MEG61RX	12.16

TOLERANCES UNLESS OTHERWISE SPECIFIED									
LEESON ELECTRIC CORPORATION									
DRAWN				TITLE		M099460.461.462 DUTLINE			
APPR.									
				CUSTOMER					
				R.F.P.					
				SCALE		1:1			
				REF.		DATE		REV.	
				FIVE		06.10.2006		DRAWING NO.	
THIS DRAWING IN DESIGN AND DETAIL IS OUR PROPERTY AND MUST NOT BE USED EXCEPT IN CONNECTION WITH OUR WORK. ALL RIGHTS OF DESIGN AND INVENTION ARE RESERVED IN THIS IS AN ELECTRONICALLY GENERATED DOCUMENT - DO NOT SCALE THIS PRINT									
REVISION									
BY & DATE				CHK'D.					
NO.									

VIEW FROM OUTSIDE OF MOTOR AT SWITCH END.



				TOLERANCES UNLESS OTHERWISE SPECIFIED			LEESON ELECTRIC CORPORATION			
				DEC.	INCHES	METRIC				
				.X	±	±	DRAWN JRW 10/01/75	TITLE EXTERNAL WIRING DIAGRAM TYPE "P" W/PROTECTOR		
				.XX	±	±	APPR. JBM 10/02/75			
08	REDRAWN ON CAD	DBT 05/28/97		.XXX	±	±	R.F.P.	MAT'L. DECAL - 004011		
NO.	REVISION	BY & DATE	CH'K'D.	.XXXX	±	±	SCALE 1=1			
THIS DRAWING IN DESIGN AND DETAIL IS OUR PROPERTY AND MUST NOT BE USED EXCEPT IN CONNECTION WITH OUR WORK ALL RIGHTS OF DESIGN AND INVENTION ARE RESERVED THIS IS AN ELECTRONICALLY GENERATED DOCUMENT - DO NOT SCALE THIS PRINT				FRACTIONS	±		REF. 005003	FINISH		REV. 08
				ANGLES	±		FMF W-P5567			DRAWING NO. 005109-01