

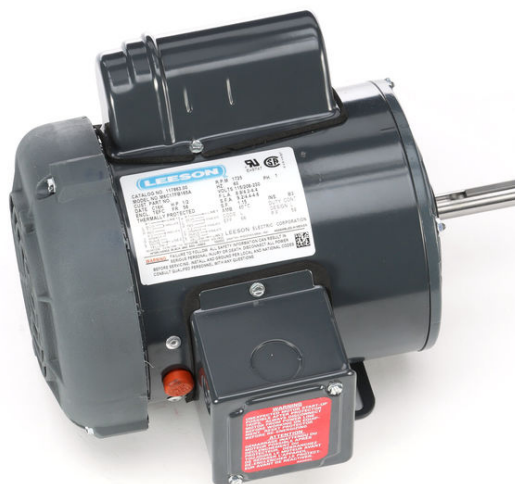
PRODUCT INFORMATION PACKET

Model No: M009086.00

Catalog No: M009086.00

0.5HP..1725RPM.56.TEFC.115/208-230V.1PH.60HZ.CONT.MANUAL.40C.1.15SF.RIGID.AG - .M6C17FB143-A

Agricultural Motors



Regal and Marathon are trademarks of Regal Rexnord Corporation or one of its affiliated companies.

©2021 Regal Rexnord Corporation, All Rights Reserved. MC017097E

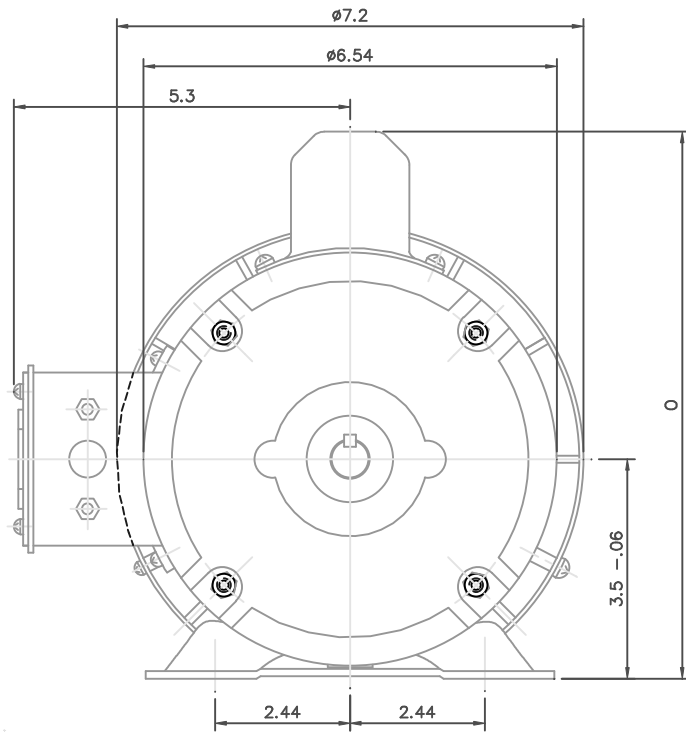
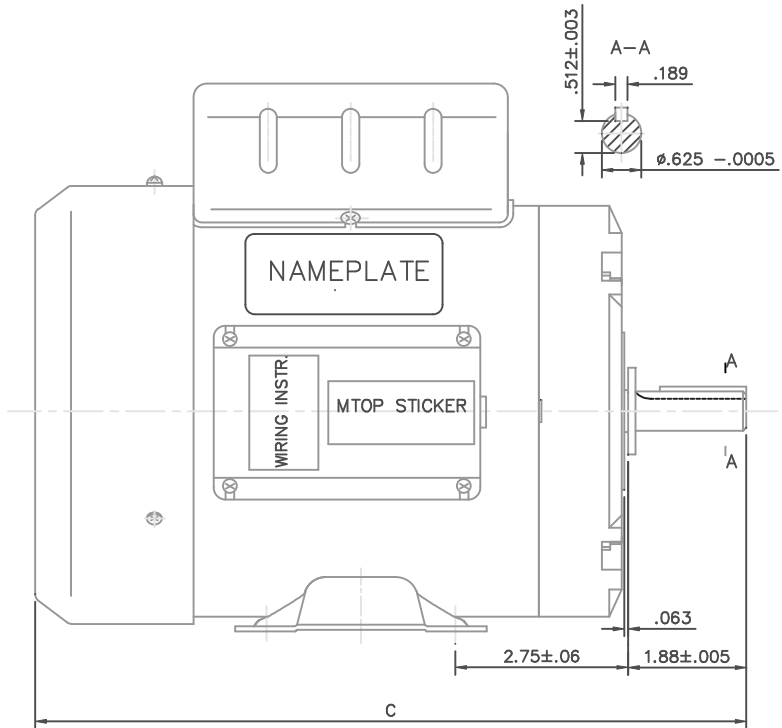
Nameplate Specifications

Output HP	0.50 Hp	Output KW	0.37 kW
Frequency	60 Hz	Voltage	115/208-230 V
Current	7.8/3.7-3.9 A	Speed	1725 rpm
Service Factor	1.15	Phase	1
Efficiency	68 %	Power Factor	60
Duty	Continuous	Insulation Class	B
Design Code	N	KVA Code	K
Frame	56	Enclosure	Totally Enclosed Fan Cooled
Thermal Protection	Manual	Ambient Temperature	40 °C
Drive End Bearing Size	6203	Opp Drive End Bearing Size	6203
UL	Recognized	CSA	Y
CE	N	IP Code	43
Number of Speeds	1		

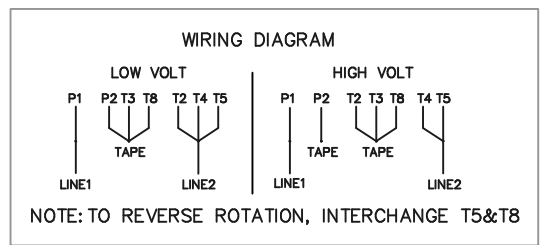
Technical Specifications

Electrical Type	Capacitor Start Induction Run	Starting Method	Across The Line
Poles	4	Rotation	Selective Counterclockwise
Resistance Main	3.462 Ohms	Mounting	Rigid Base
Motor Orientation	Nan	Drive End Bearing	Ball
Opp Drive End Bearing	Ball	Frame Material	Rolled Steel
Shaft Type	NEMA 56	Assembly/Box Mounting	NAN
Connection Drawing	005003.03	Outline Drawing	169873

This is an uncontrolled document once printed or downloaded and is subject to change without notice. Date Created:10/26/2021



LEESON CAT.NO.	C	O
M002256	11.0	8.4
M009086	12.55	8.4
M009087	11.5	8.8
M009088		8.8

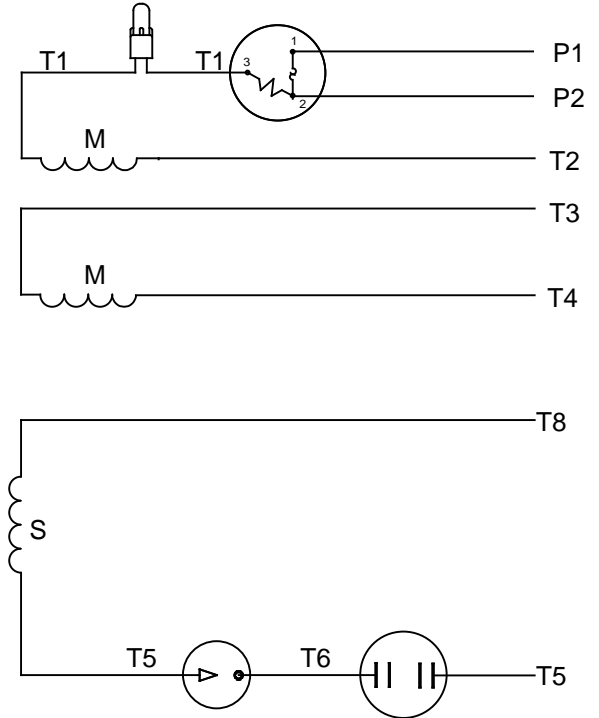


		TOLERANCES UNLESS SPECIFIED		LEESON	ELECTRIC MOTORS GEARMOTORS AND DRIVES	DRAWN	RLW 07/23/02		
		DEC.	INCHES			CHK	APPD		
		.X	±.1	TITLE OUTLINE 56 FRAME WITH BASE		SCALE	1=50		
01	REDRAWN TO CURRENT DIMENSION STANDARDS, EDITED	.XX	±.03			REF			
	COLUMN C TO NEW DIMENSION	.XXX	±.005			FMF			
		.XXXX	±.0005	MAT'L		PREV			
NO.	REVISION	BY & DATE	CHK	ANG	±1/2'	FINISH			
THIS DRAWING IN DESIGN AND DETAIL IS OUR PROPERTY AND MUST NOT BE USED EXCEPT IN CONNECTION WITH OUR WORK ALL RIGHTS OF DESIGN AND INVENTION ARE RESERVED THIS IS AN ELECTRONICALLY GENERATED DOCUMENT - DO NOT SCALE THIS PRINT				RFP	CAD FILE	169873	SIZE	DRAWING NO.	REV.
				DIST		B	169873	01	

VIEW FROM OUTSIDE OF MOTOR AT SWITCH END



LINE LEADS



RBC PROPRIETARY AND CONFIDENTIAL INFORMATION
 This document is the property of REGAL BELOIT CORPORATION ("RBC") including its subsidiaries and divisions and contains proprietary information of RBC. This document is loaned on the express condition that neither it nor the information contained therein shall be disclosed to others without the express written consent of RBC, and that the information shall be used by the recipient only as approved expressly by RBC. This document shall be returned to RBC upon its request. This document may be subject to certain restrictions under U.S. export control laws and regulations.

	ROTATION FACING LEAD END	L1	L2	JOIN	INSULATE SEPARATELY
HIGH VOLT	C.C.W.	P1	T4 T5	T2,T3 T8	P2
	C.W.	P1	T4 T8	T2,T3 T5	P2
LOW VOLT	C.C.W.	P1	T2,T4 T5	P2,T3 T8	---
	C.W.	P1	T2,T4 T8	P2,T3 T5	---

		TOLERANCES UNLESS SPECIFIED		LEESON	ELECTRIC MOTORS GEARMOTORS AND DRIVES	DRAWN WLV 08/20/79
		DEC	INCHES			
		.X	±.1			APPR WRK 08/27/76
		.XX	±.01	TITLE	EXTERNAL WIRING DIAGRAM	SCALE 1:1
06	REDRAWN IN SOLIDWORKS	VJB	7/22/2011		TYPE "C" W/PROTECTOR	REF
05	REDRAWN ON CAD	DBT	05/27/97		MAT'L DECAL - 004011	FMF
NO	REVISION	BY & DATE	CHK	ANG	±1/2°	PAGE OF
THIRD ANGLE PROJECTION		RFP		PREV	SIZE	DRAWING NO
		NETWORK FILE NAME		00500303	A	005003-03
						REV
						06