



AMPRO ELECTRIC LTD.
www.amproelectric.com
1-800-361-3509


TRIDENT[®]
GEARS



TRIDENT CATALOGUE

 **LONDON**
519-439-9748

TILLSONBURG
519-842-7194

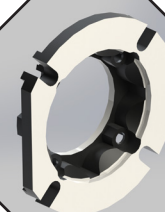
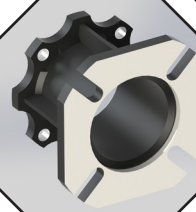
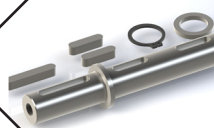
CHATHAM
519-354-2730

SARNIA
519-344-3393



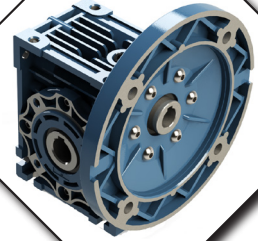
24/7/365
Emergency Service

Proudly Serving
Ontario
Since 1990





TRIDENT
GEARS



TRIDENT Aluminum HSM | Worm Gear Box 030

*Output RPM Based off 1800RPM Input

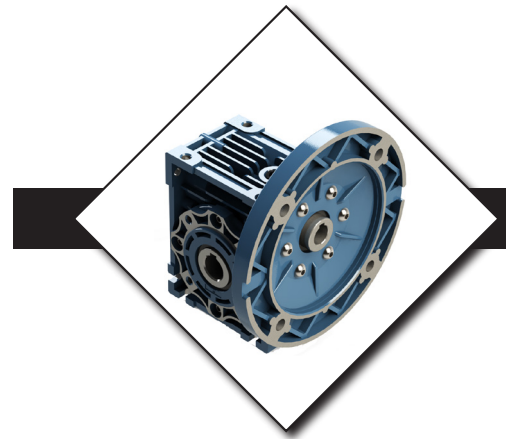
Part Number	Ratio	Output RPM	Output Torque	Input Flange	Input HP
HHM-030-5:1-56C	5:1	350	160	56C	1.02
HHM-030-7.5:1-56C	7.5:1	223	160	56C	0.7
HHM-030-10:1-56C	10:1	175	160	56C	0.54
HHM-030-15:1-56C	15:1	116	160	56C	0.38
HHM-030-20:1-56C	20:1	88	151	56C	0.28
HHM-030-25:1-56C	25:1	70	185	56C	0.3
HHM-030-30:1-56C	30:1	58	177	56C	0.25
HHM-030-40:1-56C	40:1	44	160	56C	0.19
HHM-030-50:1-56C	50:1	35	151	56C	0.15
HHM-030-60:1-56C	60:1	29	134	56C	0.12
HHM-030-80:1-56C	80:1	21	109	56C	0.08

Accessories

HHM-030-FA-OUTPUTFLANGE
HHM-030-SINGLESHAFT 5/8"
HHM-030-DOUBLESHAFT 5/8"
HHM-030-TORQUEARM



TRIDENT
GEARS



TRIDENT Aluminum HSM | Worm Gear Box 040

*Output RPM Based off 1800RPM Input

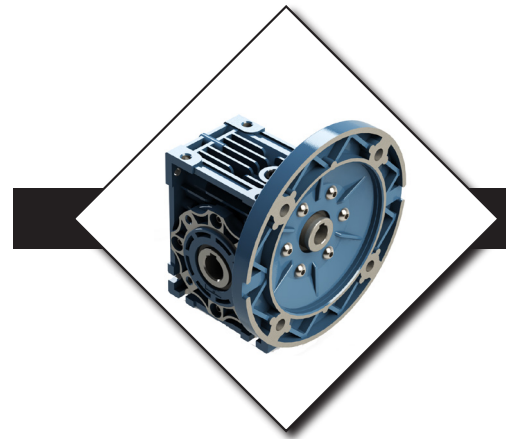
Part Number	Ratio	Output RPM	Output Torque	Input Flange	Input HP
HHM-040-5:1-56C	5:1	350	303	56C	1.89
HHM-040-7.5:1-56C	7.5:1	223	353	56C	1.5
HHM-040-10:1-56C	10:1	175	370	56C	1.21
HHM-040-15:1-56C	15:1	116	370	56C	0.83
HHM-040-20:1-56C	20:1	88	361	56C	0.63
HHM-040-25:1-56C	25:1	70	328	56C	0.48
HHM-040-30:1-56C	30:1	58	403	56C	0.53
HHM-040-40:1-56C	40:1	44	378	56C	0.4
HHM-040-50:1-56C	50:1	35	353	56C	0.31
HHM-040-60:1-56C	60:1	29	319	56C	0.25
HHM-040-80:1-56C	80:1	21	277	56C	0.18
HHM-040-100:1-56C	100:1	17.5	244	56C	0.14

Accessories

- HHM-050-FA-OUTPUTFLANGE
- HHM-050-FB-OUTPUTFLANGE
- HHM-050-FC-OUTPUTFLANGE
- HHM-050-FD-OUTPUTFLANGE
- HHM-050-BASE
- HHM-050-SINGLESHAFT 3/4"
- HHM-050-DOUBLESHAFT 3/4"
- HHM-050-TORQUEARM



TRIDENT
GEARS



TRIDENT Aluminum HSM | Worm Gear Box 050

*Output RPM Based off 1800RPM Input

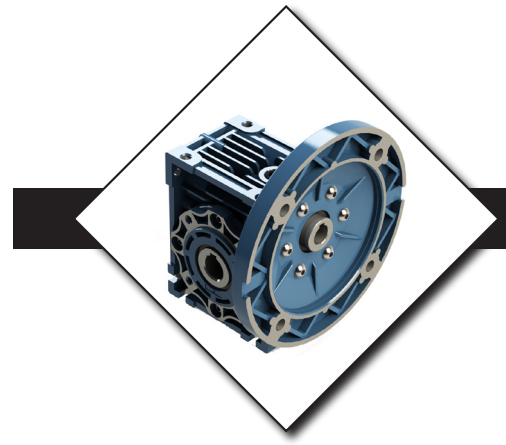
Part Number	Ratio	Output RPM	Output Torque	Input Flange	Input HP
HHM-050-5:1-56C	5:1	350	572	56C	3.57
HHM-050-7.5:1-56C	7.5:1	223	647	56C	2.72
HHM-050-10:1-56C	10:1	175	664	56C	2.12
HHM-050-15:1-56C	15:1	116	681	56C	1.52
HHM-050-20:1-56C	20:1	88	656	56C	1.14
HHM-050-25:1-56C	25:1	70	597	56C	0.86
HHM-050-30:1-56C	30:1	58	740	56C	0.94
HHM-050-40:1-56C	40:1	44	689	56C	0.7
HHM-050-50:1-56C	50:1	35	647	56C	0.56
HHM-050-60:1-56C	60:1	29	605	56C	0.47
HHM-050-80:1-56C	80:1	21	546	56C	0.35
HHM-050-100:1-56C	100:1	17.5	462	56C	0.26

Accessories

- HHM-050-FA-OUTPUTFLANGE
- HHM-050-FB-OUTPUTFLANGE
- HHM-050-FC-OUTPUTFLANGE
- HHM-050-FD-OUTPUTFLANGE
- HHM-050-BASE
- HHM-050-SINGLESHAFT 1.00"
- HHM-050-DOUBLESHAFT 1.00"
- HHM-050-TORQUEARM



TRIDENT
GEARS



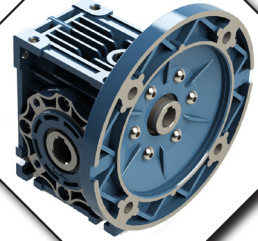
TRIDENT Aluminum HSM | Worm Gear Box 063

*Output RPM Based off 1800RPM Input

Part Number	Ratio	Output RPM	Output Torque	Input Flange	Input HP
HHM-063-5:1-56C	5:1	350	897	56C	5.52
HHM-063-5:1-140TC	5:1	350	897	140TC	5.52
HHM-063-7.5:1-56C	7.5:1	223	1076	56C	4.46
HHM-063-7.5:1-140TC	7.5:1	223	1076	140TC	4.46
HHM-063-10:1-56C	10:1	175	1108	56C	3.52
HHM-063-10:1-140TC	10:1	175	1108	140TC	3.52
HHM-063-15:1-56C	15:1	116	1236	56C	2.7
HHM-063-15:1-140TC	15:1	116	1236	140TC	2.7
HHM-063-20:1-56C	20:1	88	1225	56C	2.06
HHM-063-20:1-140TC	20:1	88	1225	140TC	2.06
HHM-063-25:1-56C	25:1	70	1124	56C	1.56
HHM-063-25:1-140TC	25:1	70	1124	140TC	1.56
HHM-063-30:1-56C	30:1	58	1345	56C	1.64
HHM-063-30:1-140TC	30:1	58	1345	140TC	1.64
HHM-063-40:1-56C	40:1	44	1261	56C	1.21
HHM-063-40:1-140TC	40:1	44	1261	140TC	1.21
HHM-063-50:1-56C	50:1	35	1208	56C	0.99
HHM-063-50:1-140TC	50:1	35	1208	140TC	0.99
HHM-063-60:1-56C	60:1	29	1135	56C	0.82
HHM-063-60:1-140TC	60:1	29	1135	140TC	0.82
HHM-063-80:1-56C	80:1	21	1027	56C	0.6
HHM-063-80:1-140TC	80:1	21	1027	140TC	0.6
HHM-063-100:1-56C	100:1	17.5	992	56C	0.51
HHM-063-100:1-140TC	100:1	17.5	992	140TC	0.51



TRIDENT[®]
GEARS



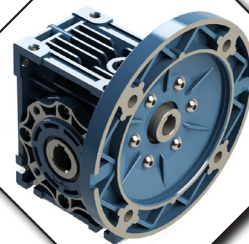
TRIDENT Aluminum HSM | Worm Gear Box 063

Accessories

HHM-063-FA-OUTPUTFLANGE
HHM-063-FB-OUTPUTFLANGE
HHM-063-FC-OUTPUTFLANGE
HHM-063-FD-OUTPUTFLANGE
HHM-063-FE-OUTPUTFLANGE
HHM-063-BASE-B
HHM-063-TORQUEARM
HHM-063-SINGLESHAFT 1-1/8"
HHM-063-DOUBLESHAFT 1-1/8"



TRIDENT
GEARS



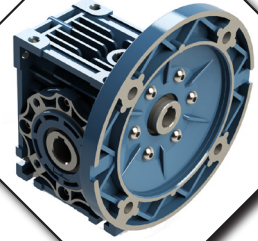
TRIDENT Aluminum HSM | Worm Gear Box 075

*Output RPM Based off 1800RPM Input

Part Number	Ratio	Output RPM	Output Torque	Input Flange	Input HP
HHM-075-7.5:1-56C	56C	223	1555	56C	6.44
HHM-075-7.5:1-140TC	140TC	223	1555	140TC	6.44
HHM-075-7.5:1-180TC	180TC	223	1555	180TC	6.44
HHM-075-10:1-56C	56C	175	1656	56C	5.2
HHM-075-10:1-140TC	140TC	175	1656	140TC	5.2
HHM-075-10:1-180TC	180TC	175	1656	180TC	5.2
HHM-075-15:1-56C	56C	116	1900	56C	4.07
HHM-075-15:1-140TC	140TC	116	1900	140TC	4.07
HHM-075-15:1-180TC	180TC	116	1900	180TC	4.07
HHM-075-20:1-56C	56C	88	1953	56C	3.24
HHM-075-20:1-140TC	140TC	88	1953	140TC	3.24
HHM-075-20:1-180TC	180TC	88	1953	180TC	3.24
HHM-075-25:1-56C	56C	70	1784	56C	2.43
HHM-075-25:1-140TC	140TC	70	1784	140TC	2.43
HHM-075-25:1-180TC	180TC	70	1784	180TC	2.43
HHM-075-30:1-56C	56C	58	2028	56C	2.41
HHM-075-30:1-140TC	140TC	58	2028	140TC	2.41
HHM-075-30:1-180TC	180TC	58	2028	180TC	2.41
HHM-075-40:1-56C	56C	44	2029	56C	1.9
HHM-075-40:1-140TC	140TC	44	2029	140TC	1.9
HHM-075-40:1-180TC	180TC	44	2029	180TC	1.9
HHM-075-50:1-56C	56C	35	1881	56C	1.47
HHM-075-50:1-140TC	140TC	35	1881	140TC	1.47
HHM-075-50:1-180TC	180TC	35	1881	180TC	1.47
HHM-075-60:1-56C	56C	29	1778	56C	1.22
HHM-075-60:1-140TC	140TC	29	1778	140TC	1.22
HHM-075-60:1-180TC	180TC	29	1778	180TC	1.22
HHM-075-80:1-56C	56C	21	1632	56C	0.91
HHM-075-80:1-140TC	140TC	21	1632	140TC	0.91
HHM-075-80:1-180TC	180TC	21	1632	180TC	0.91
HHM-075-100:1-56C	56C	17.5	1517	56C	0.74



TRIDENT[®]
GEARS



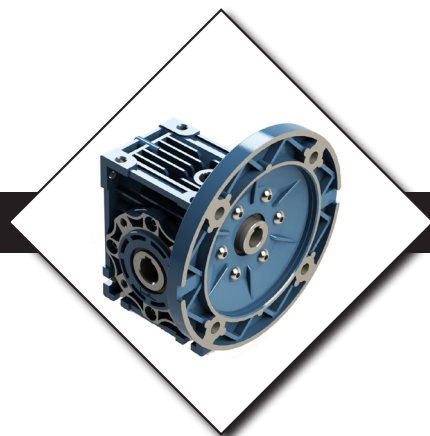
TRIDENT Aluminum HSM | Worm Gear Box 075

Accessories

HHM-075-FA-OUTPUTFLANGE
HHM-075-FB-OUTPUTFLANGE
HHM-075-BASE
HHM-075-SINGLESHAFT 1-1/8"
HHM-075-DOUBLESHAFT 1-1/8"
HHM-075-TORQUEARM



TRIDENT
GEARS



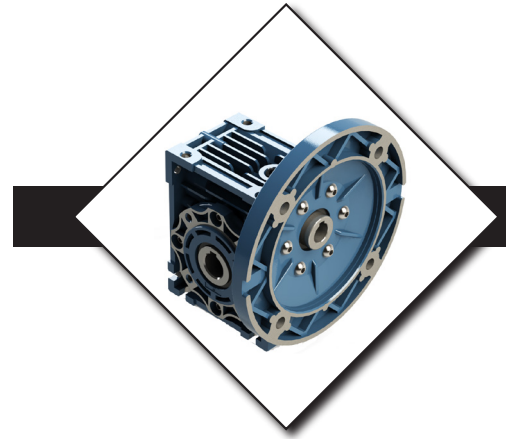
TRIDENT Aluminum HSM | Worm Gear Box 090

*Output RPM Based off 1800RPM Input

Part Number	Ratio	Output RPM	Output Torque	Input Flange	Input HP
HHM-090-7.5:1-56C	7.5:1	223	2682	56C	10.98
HHM-090-7.5:1-140TC	7.5:1	223	2682	140TC	10.98
HHM-090-7.5:1-180TC	7.5:1	223	2682	180TC	10.98
HHM-090-10:1-56C	10:01	175	2867	56C	8.92
HHM-090-10:1-140TC	10:01	175	2867	140TC	8.92
HHM-090-10:1-180TC	10:01	175	2867	180TC	8.92
HHM-090-15:1-56C	15:01	116	3330	56C	7.05
HHM-090-15:1-140TC	15:01	116	3330	140TC	7.05
HHM-090-15:1-180TC	15:01	116	3330	180TC	7.05
HHM-090-20:1-56C	20:01	88	3288	56C	5.33
HHM-090-20:1-140TC	20:01	88	3288	140TC	5.33
HHM-090-20:1-180TC	20:01	88	3288	180TC	5.33
HHM-090-25:1-56C	25:01	70	3145	56C	4.18
HHM-090-25:1-140TC	25:01	70	3145	140TC	4.18
HHM-090-25:1-180TC	25:01	70	3145	180TC	4.18
HHM-090-30:1-56C	30:1	58	3632	56C	4.21
HHM-090-30:1-140TC	30:1	58	3632	140TC	4.21
HHM-090-30:1-180TC	30:1	58	3632	180TC	4.21
HHM-090-40:1-56C	40:1	44	3330	56C	3.01
HHM-090-40:1-140TC	40:1	44	3330	140TC	3.01
HHM-090-40:1-180TC	40:1	44	3330	180TC	3.01
HHM-090-50:1-56C	50:1	35	3145	56C	2.36
HHM-090-50:1-140TC	50:1	35	3145	140TC	2.36
HHM-090-50:1-180TC	50:1	35	3145	180TC	2.36
HHM-090-60:1-56C	60:1	29	2960	56C	1.93
HHM-090-60:1-140TC	60:1	29	2960	140TC	1.93
HHM-090-60:1-180TC	60:1	29	2960	180TC	1.93
HHM-090-80:1-56C	80:1	21	2397	56C	1.27
HHM-090-80:1-140TC	80:1	21	2397	140TC	1.27
HHM-090-80:1-180TC	80:1	21	2397	180TC	1.27
HHM-090-100:1-56C	100:1	17.5	2271	56C	1.03
HHM-090-100:1-140TC	100:1	17.5	2271	140TC	1.03
HHM-090-100:1-180TC	100:1	17.5	2271	180TC	1.03



TRIDENT[®]
GEARS



TRIDENT Aluminum HSM | Worm Gear Box 090

Accessories

HHM-090-FA-OUTPUTFLANGE

HHM-090-FB-OUTPUTFLANGE

HHM-090-FC-OUTPUTFLANGE

HHM-090-FD-OUTPUTFLANGE

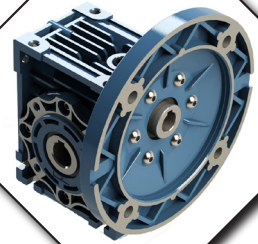
HHM-090-BASE

HHM-090-SINGLESHAFT 1-3/8"

HHM-090-DOUBLESHAFT 1-3/8"



TRIDENT
GEARS



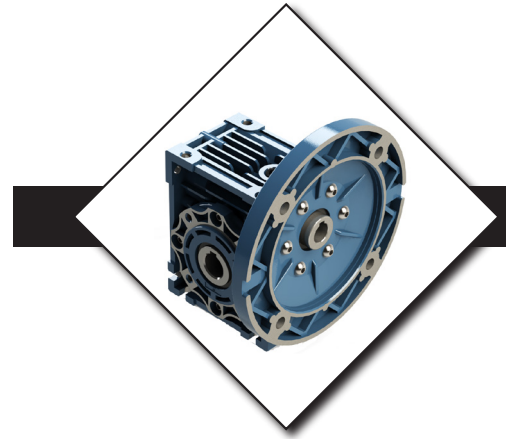
TRIDENT Aluminum HSM | Worm Gear Box 110

*Output RPM Based off 1800RPM Input

Part Number	Ratio	Output RPM	Output Torque	Input Flange	Input HP
HHM-110-7.5:1-140TC	7.5:1	223	4641	140TC	19
HHM-110-7.5:1-180TC	7.5:1	223	4641	180TC	19
HHM-110-7.5:1-210TC	7.5:1	223	4641	210TC	19
HHM-110-10:1-140TC	10:01	175	5029	140TC	15.61
HHM-110-10:1-180TC	10:01	175	5029	180TC	15.61
HHM-110-10:1-210TC	10:01	175	5029	210TC	15.61
HHM-110-15:1-140TC	15:01	116	5516	140TC	11.65
HHM-110-15:1-180TC	15:01	116	5516	180TC	11.65
HHM-110-15:1-210TC	15:01	116	5516	210TC	11.65
HHM-110-20:1-140TC	20:01	88	5415	140TC	8.68
HHM-110-20:1-180TC	20:01	88	5415	180TC	8.68
HHM-110-20:1-210TC	20:01	88	5415	210TC	8.68
HHM-110-25:1-140TC	25:1	70	5709	140TC	7.4
HHM-110-25:1-180TC	25:1	70	5709	180TC	7.4
HHM-110-25:1-210TC	25:1	70	5709	210TC	7.4
HHM-110-30:1-140TC	30:1	58	6096	140TC	6.98
HHM-110-30:1-180TC	30:1	58	6096	180TC	6.98
HHM-110-30:1-210TC	30:1	58	6096	210TC	6.98
HHM-110-40:1-140TC	40:1	44	5903	140TC	5.13
HHM-110-40:1-180TC	40:1	44	5903	180TC	5.13
HHM-110-40:1-210TC	40:1	44	5903	210TC	5.13
HHM-110-50:1-140TC	50:1	35	5550	140TC	4.01
HHM-110-50:1-180TC	50:1	35	5550	180TC	4.01
HHM-110-50:1-210TC	50:1	35	5550	210TC	4.01
HHM-110-60:1-140TC	60:1	29	5180	140TC	3.2
HHM-110-60:1-180TC	60:1	29	5180	180TC	3.2
HHM-110-60:1-210TC	60:1	29	5180	210TC	3.2
HHM-110-80:1-140TC	80:1	21	4330	140TC	2.17
HHM-110-80:1-180TC	80:1	21	4330	180TC	2.17
HHM-110-80:1-210TC	80:1	21	4330	210TC	2.17
HHM-110-100:1-140TC	100:1	17.5	4061	140TC	1.73
HHM-110-100:1-180TC	100:1	17.5	4061	180TC	1.73
HHM-110-100:1-210TC	100:1	17.5	4061	210TC	1.73



TRIDENT[®]
GEARS



TRIDENT Aluminum HSM | Worm Gear Box 110

Accessories

HHM-110-FA-OUTPUTFLANGE
HHM-110-SINGLESHAFT 1-5/8"
HHM-110-DOUBLESHAFT 1-5/8"



TRIDENT
GEARS



TRIDENT Parts and Accessories

Output Flanges



A



B



C



D

Single Output Shaft



Double Output Shaft



Base Plate



Torque Arm





TRIDENT[®]
GEARS



TRIDENT Parts and Accessories

**2.7:1 Ratio Multiplier
56C Input
56C Output
Part Number: 1905656**



**Install the Trident ratio multiplier to create more ratio
by installing the ratio multiplier between the motor
and the gearbox**



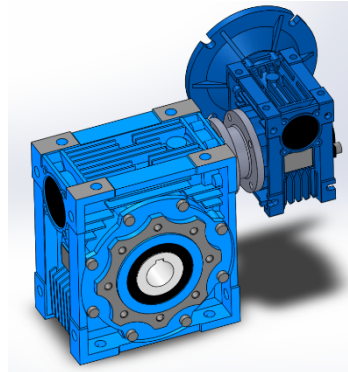
TRIDENT
GEARS



TRIDENT Parts and Accessories

Trident Double Reduction Gearbox Options

The Trident Double Reduction Kits give the ability to mount two gearboxes into one providing lots of ratio options.



Step 1 – Choose a flange that fits the gearboxratio options. Trident Double Reduction Flange

Part Number	Description
1003040	HHM 30/40 DR FLANGE
1003050	HHM 30/50 DR FLANGE
1003063	HHM 30/63 DR FLANGE
1004050	HHM 40/50 DR FLANGE
1004063	HHM 40/63 DR FLANGE
1004075	HHM 40/75, 40/90 DR FLANGE
1005063	HHM 50/63 DR FLANGE
1015090	HHM 50/75, 50/90 DR FLANGE

Step 2 – Choose a shaft that fits the correct gearbox. Trident Double Reduction Shafts

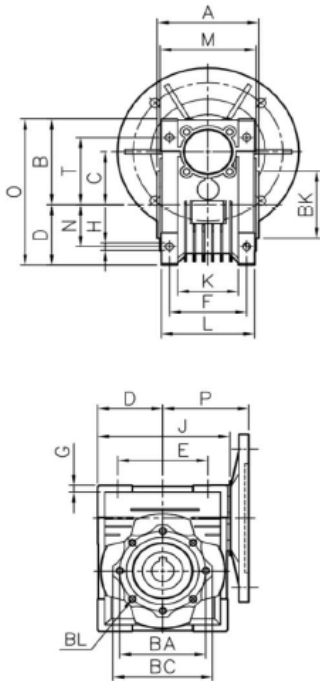
Part Number	Description
1300056	HHM 30/40, 30/50 56C DR SHAFT
1300140	HHM 30/63, 140TC DR SHAFT
1400140	HHM 40/63, 75/90 140TC DR SHAFT
1400056	HHM 50/63, 75/90 56C DR SHAFT
1500056	HHM 50/90 56CDR SHAFT
1500140	HHM 50/90 140TC DR SHAFT



TRIDENT Dimensions and Technical Information

WORM GEAR DRIVE RATINGS - SINGLE REDUCTION UNIT SIZE AND CENTER DISTANCE IN MM

RATIO	30		40		50		63		75		90		110		130		150			
	INPUT RPM	OUTPUT RPM	INPUT H.P.	OUTPUT TORQUE	INPUT H.P.	OUTPUT TORQUE	INPUT H.P.	OUTPUT TORQUE	INPUT H.P.	OUTPUT TORQUE	INPUT H.P.	OUTPUT TORQUE	INPUT H.P.	OUTPUT TORQUE	INPUT H.P.	OUTPUT TORQUE	INPUT H.P.	OUTPUT TORQUE		
5	1750	350	1.02	160	1.89	303	3.57	572	5.52	897										
7.5	1750	223	0.7	160	1.5	353	2.72	647	4.46	1076	6.44	1555	10.98	2682	19	4641	25.65	6306	41.05	10090
10	1750	175	0.54	160	1.21	370	2.12	664	3.52	1108	5.2	1656	8.92	2867	15.61	5029	21.51	6895	32.16	10426
15	1750	116	0.38	160	0.83	370	1.52	681	2.7	1236	4.07	1900	7.05	3330	11.65	5516	16.46	7735	22.11	10510
20	1750	88	0.28	151	0.63	361	1.14	656	2.06	1225	3.24	1953	5.33	3288	8.68	5415	12.21	7651	17.44	10930
25	1750	70	0.3	185	0.48	328	0.86	597	1.56	1124	2.43	1784	4.18	3145	7.4	5709	10.22	7819	13.18	10090
30	1750	58	0.25	177	0.53	403	0.94	740	1.64	1345	2.41	2028	4.21	3632	6.98	6096	9.99	8745	11.12	10090
40	1750	44	0.19	160	0.4	378	0.7	689	1.21	1261	1.9	2029	3.01	3330	5.13	5903	7.76	8829	11.45	13033
50	1750	35	0.15	151	0.31	353	0.56	647	0.99	1208	1.47	1881	2.36	3145	4.01	5550	6.02	8240	8.49	11772
60	1750	29	0.12	134	0.25	319	0.47	605	0.82	1135	1.22	1778	1.93	2960	3.2	5180	4.8	7567	6.62	10594
80	1750	21	0.08	109	0.18	277	0.35	546	0.6	1027	0.91	1632	1.27	2397	2.17	4330	3.55	7063	4.86	9670
100	1750	17.5			0.14	244	0.26	462	0.51	992	0.74	1517	1.03	2271	1.73	4061	2.66	6222	3.59	8409



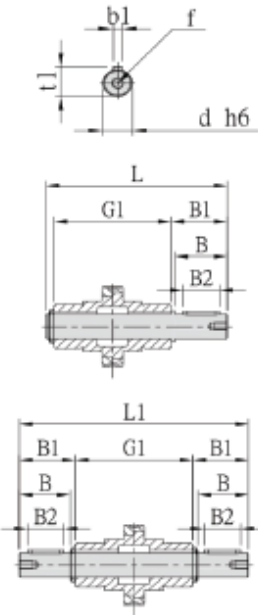
ALUMINUM WORM GEAR REDUCERS DIMENSIONS

	30	40	50	63	75	90	110	130	150
A	2.48	3.07	3.62	4.41	4.72	5.51	6.10	6.69	7.87
B	2.24	2.81	3.31	4.02	4.69	5.31	6.59	7.38	9.06
BA	2.56	2.95	3.35	3.74	4.53	5.12	6.50	8.46	8.46
BC	2.95	3.43	3.94	4.33	5.51	6.30	7.87	9.84	9.84
BH	90°	45°	45°	45°	45°	45°	45°	45°	45°
BK	2.165 0/-0.0018	2.362 0/-0.0018	2.756 0/-0.0018	3.150 0/-0.0021	3.740 0/-0.0021	4.331 0/-0.0021	5.118 0/-0.0025	7.087 0/-0.0025	7.087 0/-0.0025
BL	M6x10mm	M6x8mm	M8x10mm	M8x14mm	M8x14mm	M10x18mm	M10x18mm	M12x25mm	M12x25mm
C	1.18	1.57	1.97	2.48	2.95	3.54	4.33	5.12	5.91
D	1.57	1.97	2.36	2.83	3.39	4.06	5.02	5.81	6.69
E	2.13	2.75	3.15	3.94	4.72	5.51	6.69	7.87	9.45
F	1.73	2.36	2.76	3.35	3.54	3.94	4.53	4.72	5.71
G	0.22	0.26	0.28	0.31	0.39	0.43	0.57	0.61	0.71
H	0.26	0.26	0.33	0.33	0.45	0.51	0.55	0.63	0.71
J	3.19	3.98	4.76	5.75	6.85	8.19	9.94	11.52	13.39
K	1.26	1.69	1.93	2.64	2.83	2.91	-	-	-
L	2.20	2.80	3.35	4.06	4.41	5.12	5.67	6.10	7.28
M	2.28	2.87	3.43	4.17	4.49	5.28	5.83	6.38	7.56
N	1.06	1.38	1.57	1.97	2.36	2.76	3.35	3.94	4.72
O	3.82	4.78	5.67	6.85	8.07	9.37	11.61	13.19	15.75
P	2.64	3.39	3.70	4.13	4.96	5.63	6.61	7.40	8.46
T	1.73	2.17	2.52	3.15	3.66	4.02	4.92	5.51	7.09
Z	2.91	3.63	3.92	4.71	5.25	6.09	6.77	7.09	8.07



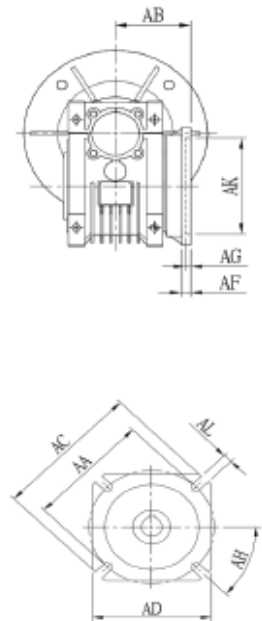
TRIDENT®

GEARS



OUTPUT SHAFT									
1	30	40	50	63	75	90	110	130	150
d	0.625 0/-0.0005	0.750 0/-0.0005	1.000 0/-0.0005	1.125 0/-0.0005	1.125 0/-0.0005	1.375 0/-0.0005	1.625 0/-0.0005	1.750 0/-0.0005	2.000 0/-0.0005
b1	0.1875	0.1875	0.2500	0.2500	0.2500	0.3125	0.3750	0.3750	0.5000
t1	0.70	0.83	1.11	1.23	1.36	1.51	1.79	1.92	2.22
f	1/4-20	1/4-20	3/8-16	3/8-16	1/2-13	1/2-13	5/8-11	5/8-11	3/4-10
8	1.57	1.97	1.97	2.36	2.76	3.15	3.54	3.54	3.94
81	1.67	2.09	2.11	2.50	2.89	3.33	3.72	3.74	4.13
82	1.125	1.500	1.500	1.875	2.250	2.500	2.750	2.750	3.500
G1	2.48	3.07	3.62	4.41	4.72	5.51	6.10	6.69	7.87
L	4.41	5.43	6.02	7.20	7.56	9.21	9.80	10.43	11.69
L1	5.82	7.25	7.84	9.41	10.50	12.17	13.54	14.17	16.13

OUTPUT FLANGE										
	OUTPUT FLANGE	AA	AB	AC	AD	AF	AG	AH	AK	AL
30	FA	2.68	2.15	3.15	2.76	0.24	0.16	45°	1.969 +0.0015/0	0.26
40	FA	2.95	2.64	4.33	3.74	0.28	0.16	45°	2.326 +0.0018/0	0.35
	FB	2.95	3.82	4.33	3.74	0.28	0.16	45°	2.326 +0.0018/0	0.35
	FC	4.53	3.15	5.51	-	0.35	0.20	45°	3.740 +0.0021/0	0.35
	FD	3.94	2.28	4.72	-	0.47	0.20	45°	3.150 +0.0018/0	0.35
50	FA	3.35	3.54	4.92	4.33	0.35	0.20	45°	2.756 +0.0018/0	0.43
	FB	3.35	4.72	4.92	4.33	0.35	0.20	45°	2.756 +0.0018/0	0.43
	FC	5.12	3.50	6.30	-	0.39	0.20	45°	4.331 +0.0021/0	0.37
	FD	4.53	2.83	5.51	-	0.57	0.20	45°	3.740 +0.0021/0	0.43
63	FA	5.91	3.23	7.09	5.59	0.39	0.24	45°	4.528 +0.0021/0	0.43
	FB	5.91	4.41	7.09	5.59	0.39	0.24	45°	4.528 +0.0021/0	0.43
	FC	6.50	3.86	7.87	-	0.39	0.20	45°	5.118 +0.0025/0	0.43
	FD	6.50	4.21	7.87	-	0.39	0.20	45°	5.118 +0.0025/0	0.43
	FE	5.12	3.17	6.30	-	0.65	0.20	45°	4.331 +0.0021/0	0.43
75	FA	6.50	4.37	7.87	6.69	0.51	0.24	45°	5.118 +0.0025/0	0.55
	FB	5.12	3.54	6.30	-	0.51	0.24	45°	4.331 +0.0021/0	0.55
90	FA	6.89	4.37	8.27	7.87	0.51	0.24	45°	5.984 +0.0025/0	0.55
	FB	8.46	4.80	9.84	-	0.71	0.24	45°	7.087 +0.0025/0	0.55
	FC	6.50	4.33	7.87	-	0.67	0.24	45°	5.118 +0.0025/0	0.43
	FD	6.89	5.94	8.27	-	0.51	0.24	45°	5.984 +0.0025/0	0.55
110	FA	9.06	5.16	11.02	10.24	0.59	0.24	45°	6.693 +0.0025/0	0.55
130	FA	10.4	5.51	12.6	11.42	0.59	0.24	45°	7.087 +0.0025/0	0.63
150	FA	10.4	6.10	12.6	11.42	0.59	0.24	45°	7.087 +0.0025/0	0.63



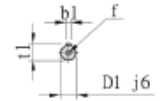
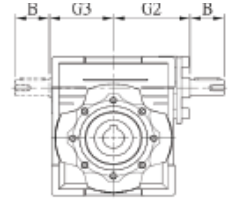


TRIDENT®

GEARS

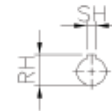
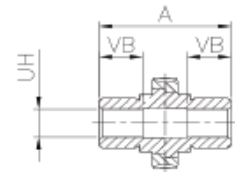
INPUT SHAFT

	30	40	50	63	75	90	110	130	150
D1	0.375 0/-0.0005	0.500 0/-0.0005	0.625 0/-0.0005	0.750 0/-0.0005	0.875 0/-0.0005	0.875 0/-0.0005	1.125 0/-0.0005	1.125 0/-0.0005	1.375 0/-0.0005
b1	0.094	0.125	0.188	0.188	0.188	0.188	0.250	0.250	0.315
t1	0.42	0.55	0.70	0.83	0.96	0.96	1.24	1.36	1.51
f	1/4-20	1/4-20	1/4-20	1/4-20	1/4-20	1/4-20	3/8-16	1/2-13	1/2-13
8	1.18	1.18	1.58	1.97	2.36	2.36	2.76	3.15	3.15
G2	2.01	2.36	2.91	3.54	4.13	4.92	5.59	6.38	7.68
G3	1.77	2.09	2.52	2.95	3.54	4.25	5.31	6.10	6.89



OUTPUT BORE

	30	40	50	63	75	90	110	130	150
A	2.48	3.07	3.62	4.41	4.72	5.51	6.10	6.69	7.87
VB	0.83	1.14	1.28	1.42	1.56	1.77	1.97	2.24	2.85
UH	0.625+0.001/0	0.750+0.001/0	1.000+0.001/0	1.125+0.001/0	1.250+0.001/0	1.375+0.001/0	1.625+0.001/0	1.750+0.001/0	2.000+0.001/0
SH	0.1875	0.1875	0.2500	0.2500	0.2500	0.3125	0.3750	0.3750	0.5000
RH	0.71	0.84	1.12	1.24	1.37	1.52	1.80	1.93	2.22



INPUT FLANGE - INPUT BORE

SIZE	NEMA	N	M	P	D	B	T	I													
								5	7.5	10	15	20	25	30	40	50	60	80	10		
								D													
30	48C	3.00	3.75	5.625	0.500	0.188	0.594	*	*	*	*	*	*	*	*	*	*	*	*	*	*
	56C	4.50	5.88	6.500	0.625	0.188	0.719	*	*	*	*	*	*	*	*	*	*	*	*	*	*
40	56C	4.50	5.88	6.500	0.625	0.188	0.719	*	*	*	*	*	*	*	*	*	*	*	*	*	*
	56C	4.50	5.88	6.500	0.625	0.188	0.719	*	*	*	*	*	*	*	*	*	*	*	*	*	*
63	56C	4.50	5.88	6.500	0.625	0.188	0.719					*	*	*	*	*	*	*	*	*	*
	140TC	4.50	5.88	6.500	0.875	0.188	0.969	*	*	*	*	*	*	*	*	*	*	*	*	*	*
75	56C	4.50	5.88	6.500	0.625	0.188	0.719									*	*	*	*	*	*
	140TC	4.50	5.88	6.500	0.875	0.188	0.969	-	-	-	*	*	*	*	*	*	*	*	*	*	*
	180TC	8.50	7.25	9.000	1.125	0.250	1.246		*	*	*	*	*	*	*	*	*	*	*	*	*
90	56C	4.50	5.88	6.500	0.625	0.188	0.719												*	*	*
	140TC	4.50	5.88	6.500	0.875	0.188	0.969					*	*	*	*	*	*	*	*	*	*
	180TC	8.50	7.25	9.000	1.125	0.250	1.246	-	*	*	*	*	*	*	*	*	*	*	*	*	*
110	140TC	4.50	5.88	6.500	0.875	0.188	0.969									*	*	*	*	*	*
	180TC	8.50	7.25	9.000	1.125	0.250	1.246					*	*	*	*	*	*	*	*	*	*
	210TC	8.50	7.25	9.000	1.375	0.312	1.523		*	*	*	*	*	*	*	*	*	*	*	*	*
130	140TC	4.50	5.88	6.500	0.875	0.188	0.969									*	*	*	*	*	*
	180TC	8.50	7.25	9.000	1.125	0.250	1.246									*	*	*	*	*	*
	210TC	8.50	7.25	9.000	1.375	0.312	1.523		*	*	*	*	*	*	*	*	*	*	*	*	*
150	180TC	8.50	7.25	9.000	1.125	0.250	1.246									*	*	*	*	*	*
	210TC	8.50	7.25	9.000	1.375	0.312	1.523					*	*	*	*	*	*	*	*	*	*
	250TC	8.50	7.25	9.000	1.625	0.375	1.800	*	*	*	*	*	*	*	*	*	*	*	*	*	*

