

**NEMA**

**Model FDR.754C-01**  
MFG PN: SLF563/4Z4L



**AMPRO ELECTRIC LTD.**  
ECRA / ESA LICENCE #7015465

# Model **FDR.754C-01**

## Product Data Package



MODEL	HP	RPM	VOLTAGE	PHASE	Hz	FRAME	MOUNT	ENCLOSURE
FDR.754C-01	0.75	1725	115/208-230	1	60	56	Rigid	TEFC

### Toronto

**TOLL FREE** 1.888.286.1820  
**PHONE** 905.829.1001  
**EMAIL** info@techtopcanada.com

### Montreal

**TOLL FREE** 1.844.354.5111  
**PHONE** 514.354.1002  
**EMAIL** infoQC@techtopcanada.com

### Moncton

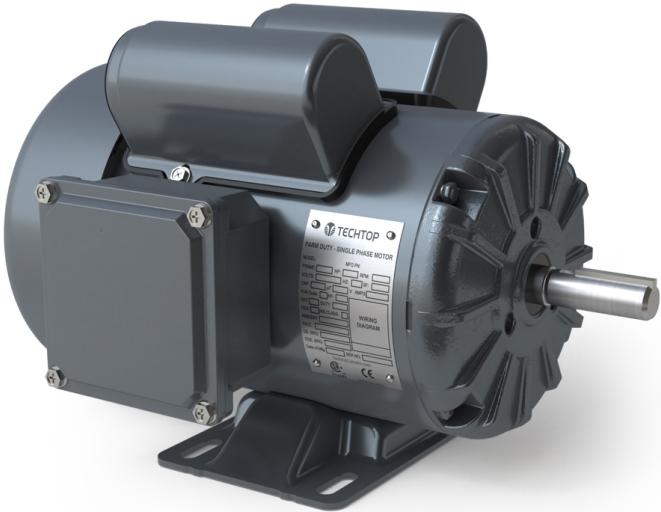
**PHONE** 506.386.5794  
**EMAIL** infoNB@techtopcanada.com

### Winnipeg

**PHONE** 204.633.2779  
**EMAIL** infoMB@techtopcanada.com

### Vancouver

**PHONE** 604.525.1551  
**EMAIL** infoBC@techtopcanada.com



### Index

Motor General Data Sheet	P 2
Nameplate Information	P 3
Technical Performance Data	P 4
Motor General Wiring Diagram	P 5
Motor General Outline Drawing	P 6



**Model FDR.754C-01**  
MFG PN: SLF563/4Z4L

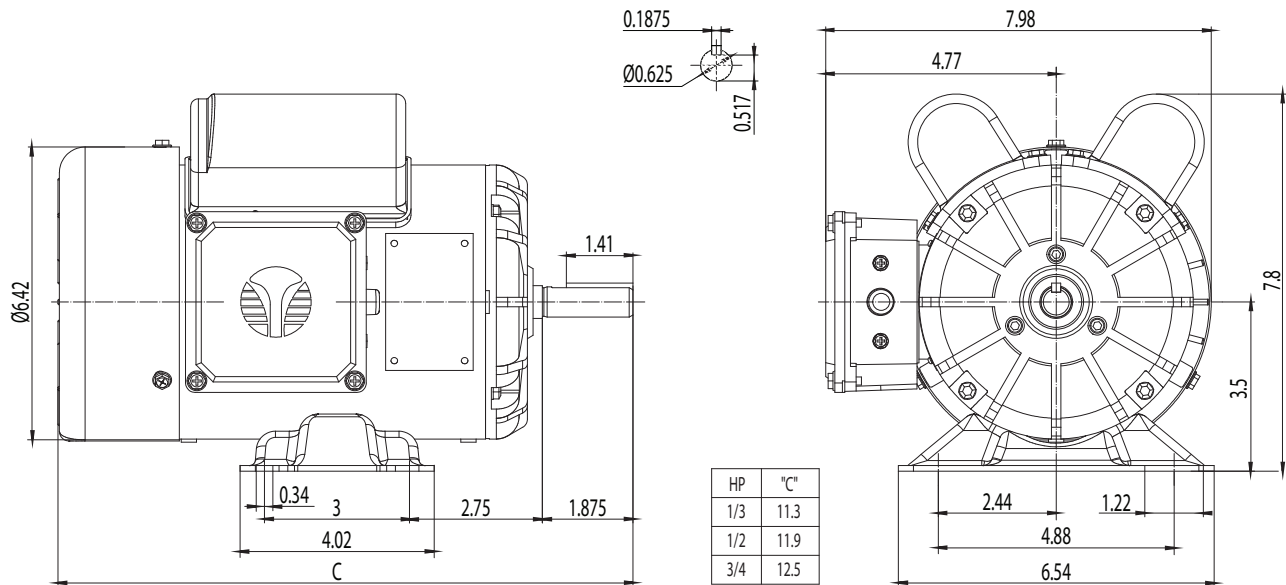
ELECTRICAL DATA		
Rated Motor Output Power	0.75	HP
	-	kW
Rated Motor Speed	1725	r/min 60Hz
	-	r/min 50Hz
Rated Motor Voltage (+/-10%)	115/208-230	V/60Hz
	-	V/50Hz
Rated Motor Current	7.4/4.1-3.7	A (I <sub>n</sub> ) @ 60Hz
	-	A (I <sub>n</sub> ) @ 50Hz
Phase	1	Ø
Locked Rotor Current @ High Voltage	22.59	A (I <sub>n</sub> ) @ 60Hz
FI Current @ 208V	4.1	A (I <sub>n</sub> ) @ 60Hz
Service Factor	1.15	@ 60Hz
	-	@ 50Hz
KVA Code	J	60Hz
	-	50Hz
Nominal Efficiency	72	% @ 60Hz
Nominal Power Factor	0.9	cosΦ @ 60Hz
Leads (Qty, Size)	7	14
Connection	-	-
Coil Resistance	-	Ω
Start Capacitor	300/125	µF/V
Run Capacitor	60/250	µF/V
<b>VFD DUTY (S.F. 1.0)</b>	<b>RATIO</b>	<b>Hz</b>
Variable Torque	-	-
Constant Torque	-	-
FULL LOAD TEMPERATURE RISE		
Full Load Temperature Rise	63	°C @ 60Hz
	-	°C @ 50Hz

GENERAL DATA		
Frame Size	56	
Enclosure	TEFC	
Mounting	Rigid	
Approximate Weight (lbs.)	30 lbs.	
Casing Material / Fan Cover	Rolled Steel	Steel
Shaft Material	1045	
NEMA Design	L	
Degree of Protection (IP)	54	
Insulation Class / Temp Rise (60Hz)	F	B
Tropicalization	NO	
Duty	Cont. / S1	
Conduit Box Location	F1	
Feet Removable / Double Drilled	NO	NO
Paintwork	7024	
	Graphite Gray	
MECHANICAL DATA		
Bearing DE Side	6203 2RS	
Bearing ODE Side	6202 2RS	
Grease Type	Mobil Polyrex EM	
Compensation Ring (wavy washer)	NDE	
Moment of Inertia (lb-ft²)	-	
Sound Pressure @ 3 FT dBA	-	
SITE CONDITIONS		
Ambient Temperature (°C)	40	
Meters Above Sea Level (MASL)	1000	
HAZARDOUS LOCATIONS		
CSA Certified	-	
Temperature Code	-	-

Questions? Call **1.888.286.1820**


**NEMA**

**Model FDR.754C-01**  
MFG PN: SLF563/4Z4L



NAMEPLATE DATA	60Hz	50Hz
Horse Power	0.75	-
RPM	1725	-
Voltage	115/208-230	-
Full Load Amps	7.4/4.1-3.7	-
Service Factor	1.15	-
KVA Code	J	-
Full Load Amps (208V)	4.1	-
Nominal Efficiency	72	-
Nominal Power Factor	0.9	-
Design	L	
Frame	56	
Enclosure Type	TEFC	
IP Rating	54	
Duty	Cont. / S1	
Insulation Class	F	
Ambient Rating	40	
Drive End Bearing	6203 2RS	
Opposite Drive End Bearing	6202 2RS	
Weight (lbs)	30	

**NAMEPLATE LAYOUT**



FARM DUTY - SINGLE PHASE MOTOR

MODEL: \_\_\_\_\_ MFG PN: \_\_\_\_\_

FRAME: \_\_\_\_\_ HP: \_\_\_\_\_ RPM: \_\_\_\_\_

VOLTS: \_\_\_\_\_ HZ: \_\_\_\_\_ SF: \_\_\_\_\_

CAP: \_\_\_\_\_  $\mu$ F \_\_\_\_\_ V AMPs \_\_\_\_\_

KVA Code: \_\_\_\_\_ PF: \_\_\_\_\_

EFF: \_\_\_\_\_ DUTY: \_\_\_\_\_

DES: \_\_\_\_\_ INS. CLASS: \_\_\_\_\_

AMBIENT: \_\_\_\_\_




ENCL: \_\_\_\_\_

DE. BRG: \_\_\_\_\_

ODE. BRG: \_\_\_\_\_

Date of Mfg: \_\_\_\_\_ SER. NO. \_\_\_\_\_

TechtopCanada.com

CAPACITOR DATA	$\mu$ F	VOLTAGE
Start Capacitor	300	125
Run Capacitor	60	250

\*For max speed please contact Techtop Canada

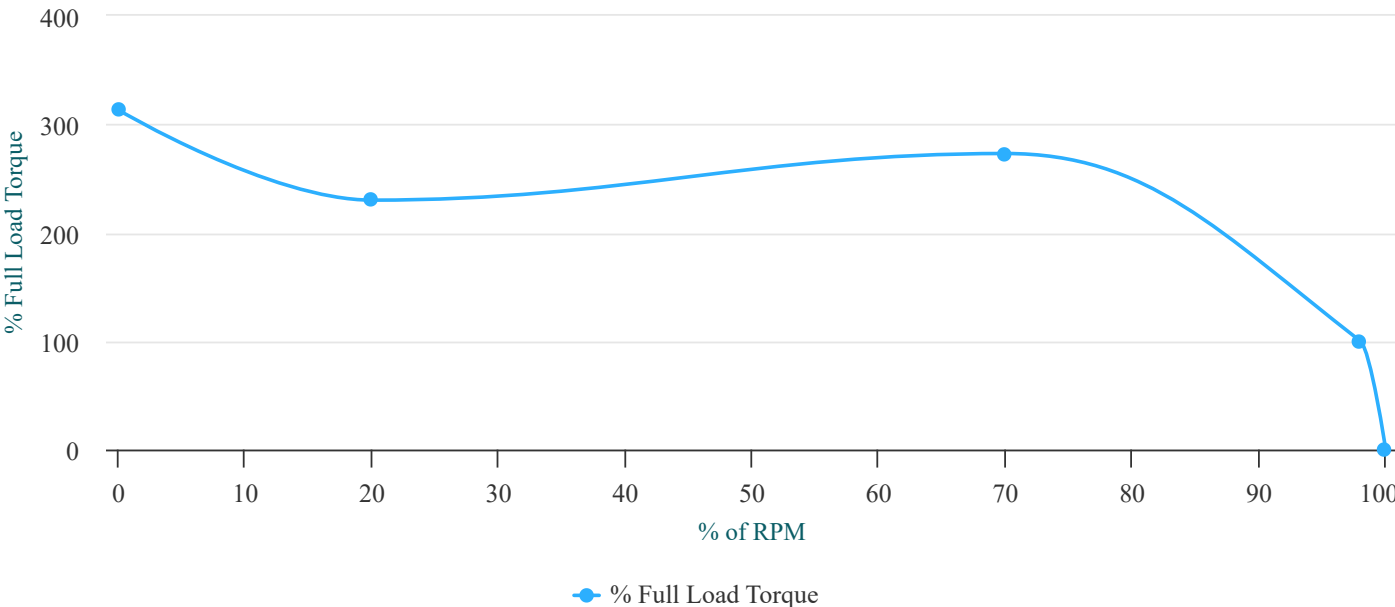
HAZARDOUS LOCATIONS	-
Class / Division	-
Groups	-

Questions? Call 1.888.286.1820



**Model FDR.754C-01**  
MFG PN: SLF563/4Z4L

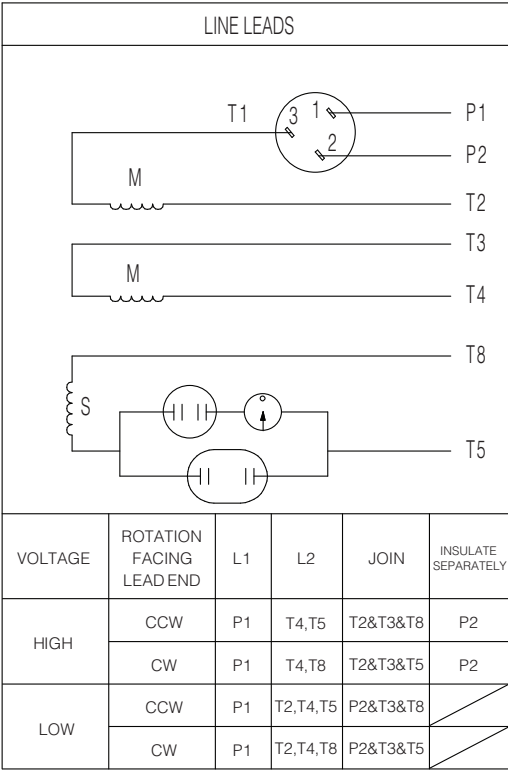
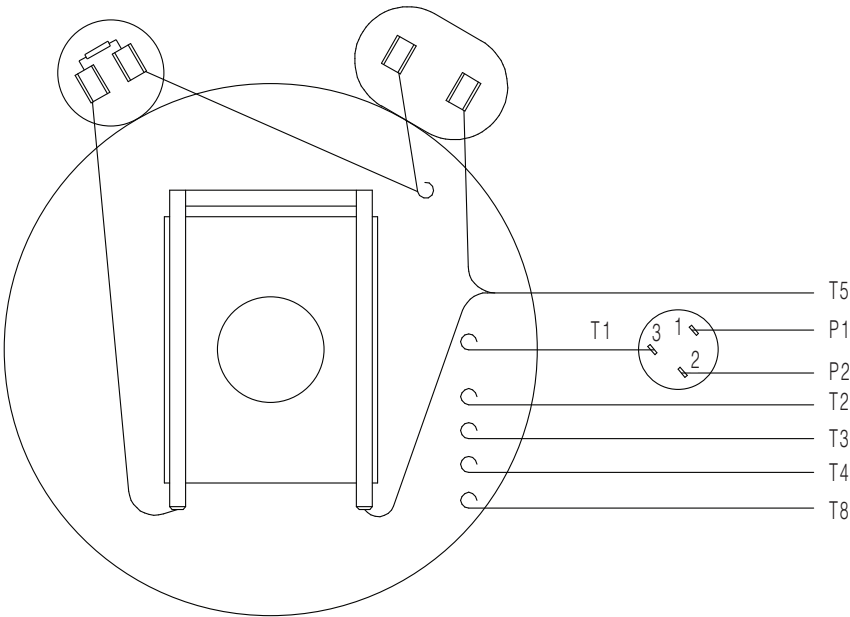
**Torque Speed (T-n) Curve**



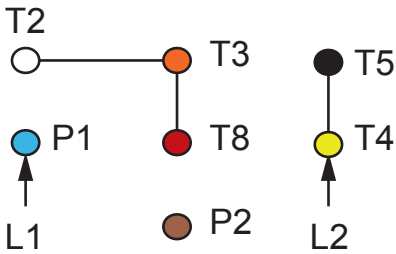
PERFORMANCE LOAD VALUES, HIGH VOLTAGE, 60Hz			TYPICAL PERFORMANCE - NOT GUARANTEED VALUES	
TORQUE VALUES	TORQUE (lb-ft)	TORQUE (% FULL LOAD)	PERFORMANCE VALUES	
Locked Rotor Torque	7.1	313	Start Configuration	DOL
Pull-Up Torque	5.3	230	Starting Current (A)	22.59
Breakdown Torque	6.2	273	No-Load Current (A)	1.4
Full Load Torque	2.3	100	No-Load Power Factor	0.18

% OF RATED LOAD	25	50	75	100	125	S.F. 1.25
Line Amperes (A)	-	-	-	3.4	-	-
Efficiency (%)	-	-	-	76.6	-	-
Speed (r/min)	-	-	-	1733	-	-
Power Factor (cosΦ)	-	-	-	0.27	-	-
Input Power (kW)	-	-	-	0.73	-	-

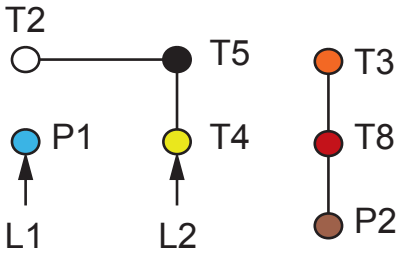
Questions? Call 1.888.286.1820



TO REVERSE ROTATION INTERCHANGE BLACK (T5)  
WITH RED (T8) FOR EITHER VOLTAGE



HIGH VOLTAGE



LOW VOLTAGE

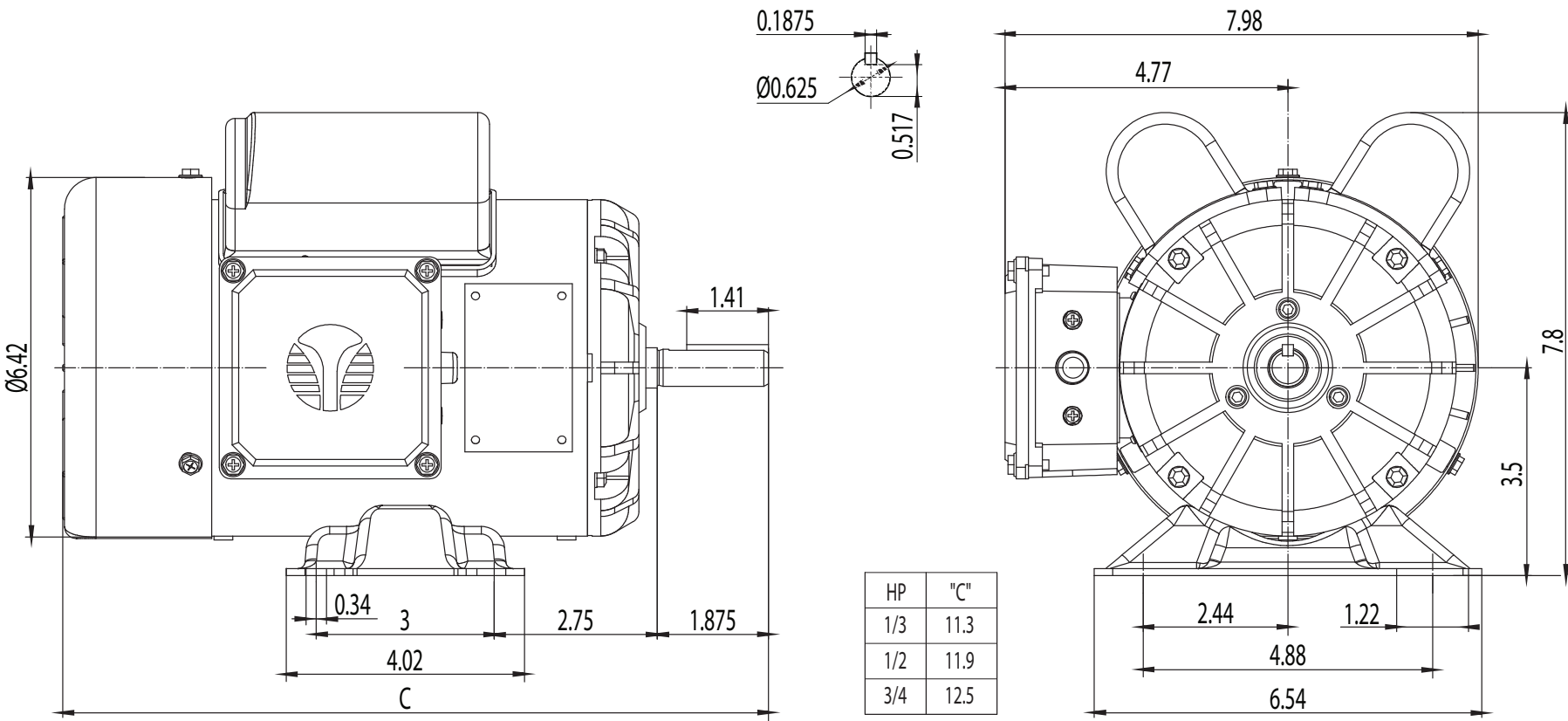
- NOTES:
- 1. CCW ROTATION FACING ODE FOR CONNECTIONS SHOWN
  - 2. TO REVERSE ROTATION, SWAP ANY TWO INPUT LINES
  - 3. WHEN MOTOR IS IN F1 POSITION, LEADS INDICATED WITH “\*” EXIT THE CASING ABOVE THE CENTER LINE OF THE MOTOR, THE REMAINING LEADS EXIT BELOW THE CENTER LINE
  - 4. LEADS MUST BE NUMBERED AND COLORED AS SHOWN
  - 5. DIAGRAMS FOR REFERENCE ONLY



DRAWING NUMBER:	NEMA-FD-56-140T
CONNECTION:	-
NUMBER OF LEADS:	7
THERMAL PROTECTION:	Manual Reset

NEMA 1Ø Farm Duty Dual Voltage

ISSUED DATE	17/01/24
FARM DUTY SINGLE PHASE MOTORS	



DRAWING NUMBER:	RD1-RS-TF-56-01	ISSUED DATE	17/01/24
DIMENSIONS:	Inches		
MOUNTING:	Rigid		
CASING MATERIAL:	Rolled Steel		FARM DUTY SINGLE PHASE MOTORS